

New Polaris Mine

Engagement Plan for the Early Engagement Phase



Canagold Resources Ltd
Suite 1250, 625 Howe Street
Vancouver, BC, V6C 2T6

March 2023

Table of Contents

| | |
|---|-------------|
| COMPANY CONTACT INFORMATION | III |
| LIST OF ABBREVIATIONS..... | IV |
| GLOSSARY | V |
| 1 INTRODUCTION | 1-1 |
| 2 PROJECT DESCRIPTION OVERVIEW..... | 2-2 |
| 2.1 PROJECT COMPONENTS | 2-4 |
| 2.2 PRELIMINARY ENGAGEMENT | 2-6 |
| 3 PURPOSE..... | 3-7 |
| 4 EARLY ENGAGEMENT | 4-8 |
| 4.1 CANAGOLD'S ENGAGEMENT PRINCIPLES AND OBJECTIVES | 4-8 |
| 4.2 ENGAGEMENT METHODS AND ACTIVITIES | 4-8 |
| 4.2.1 <i>Specific Engagement Considerations</i> | 4-10 |
| 5 EARLY ENGAGEMENT – IDENTIFICATION AND ANALYSIS | 5-12 |
| 6 INDIGENOUS NATIONS ENGAGEMENT | 6-13 |
| 6.1 EARLY ENGAGEMENT OBJECTIVES | 6-13 |
| 6.2 ENGAGEMENT METHODS AND ACTIVITIES | 6-14 |
| 6.3 INDIGENOUS KNOWLEDGE..... | 6-14 |
| 6.4 INDIGENOUS NATIONS | 6-14 |
| 6.5 TAKU RIVER TLINGIT FIRST NATION | 6-15 |
| 6.5.1 <i>Agreements</i> | 6-16 |
| 6.5.2 <i>Engagement Activities to Date</i> | 6-17 |
| 6.5.3 <i>Anticipated Engagement Activities</i> | 6-22 |
| 7 PROVINCIAL AND FEDERAL GOVERNMENT - AGENCY AND REGULATORY ENGAGEMENT .7-23 | |
| 7.1 EARLY ENGAGEMENT OBJECTIVES | 7-24 |
| 7.2 METHODS AND ACTIVITIES | 7-24 |
| 7.3 ENGAGEMENT ACTIVITIES TO DATE..... | 7-24 |
| 7.4 ANTICIPATED ENGAGEMENT ACTIVITIES | 7-25 |
| 8 PUBLIC AND STAKEHOLDER ENGAGEMENT | 8-26 |
| 8.1 EARLY ENGAGEMENT OBJECTIVES | 8-27 |

| | | |
|-----------|--|--------------|
| 8.2 | ENGAGEMENT METHODS | 8-27 |
| 8.3 | ENGAGEMENT ACTIVITIES TO DATE WITH PUBLIC AND STAKEHOLDERS | 8-27 |
| 8.4 | ANTICIPATED ENGAGEMENT ACTIVITIES WITH PUBLIC AND STAKEHOLDERS | 8-28 |
| 9 | PLAN MILESTONE SUMMARY | 9-29 |
| 10 | REFERENCES | 10-30 |

LIST OF TABLES

| | | |
|-----------|---|------|
| Table 2-1 | Summary of Project Components..... | 2-4 |
| Table 4-1 | Engagement Method and Activities | 4-8 |
| Table 6-1 | Indigenous Nations Rationale, Protocols, and Agreements..... | 6-15 |
| Table 6-2 | Key Contacts TRTFN..... | 6-15 |
| Table 6-3 | TRTFN Mining Policy and Status..... | 6-17 |
| Table 6-4 | Summary of Engagement Activities (2019 to date) | 6-17 |
| Table 6-5 | Summary of Initial Interests and Canagold’s Approach to Resolve..... | 6-20 |
| Table 6-6 | Anticipated Engagement Activities with TRTFN..... | 6-22 |
| Table 7-1 | Key Regulators and Government Agencies Contacts | 7-23 |
| Table 7-2 | Engagement with Regulators and Government Agencies | 7-24 |
| Table 7-3 | Proposed Engagement Activities with Government Agencies | 7-25 |
| Table 8-1 | Key Public and Stakeholders..... | 8-26 |
| Table 8-2 | Summary of Engagement Activities with the Public and Stakeholders about the Project | 8-27 |
| Table 8-3 | Anticipated engagement activities with Public and Stakeholders..... | 8-28 |
| Table 9-1 | Plan Milestones with Affected Parties..... | 9-29 |

LIST OF FIGURES

| | | |
|------------|---|-----|
| Figure 2-1 | Location of New Polaris Project, near Atlin, BC | 2-3 |
|------------|---|-----|

Company Contact Information

Contact information for Canagold's EA representative and contact for implementing the Plan is:

| Proponent | Canagold Resources Ltd. |
|--|---|
| Mailing Address | Suite 1250, 625 Howe Street Vancouver, British Columbia Canada V6C 2T6 |
| Phone Number | 1-604-685-9700 |
| Company Website | https://www.canagoldresources.com/ |
| Project Website | https://canagoldresources.com/projects/new-polaris/snapshot/ |
| Primary Proponent Contact | Garry Biles, President & COO garry@canagoldresources.com |
| Primary Contact for Environmental Assessment | Garry Biles |

List of Abbreviations

| | |
|-----------------|--|
| AIA | Archaeological Impact Assessment |
| AOA | Archaeological Overview Assessment |
| ATELP | Atlin Tlingit Economic Limited Partnership |
| BC | British Columbia |
| BC EAA | British Columbia Environmental Assessment Act |
| BC EAO | BC Environmental Assessment Office |
| BC ENV | Ministry of Environment and Climate Change Strategy |
| BC MFOR | Ministry of Forests |
| CIL | Carbon in Leach |
| CDF | Co-Disposal Facility |
| CSF | Combined Storage Facility |
| Client | Canagold Resources Ltd. |
| DPD | Detailed Project Description |
| EA | Environmental Assessment |
| EAC | Environmental Assessment Certificate |
| EMLI | Ministry of Energy, Mines, and Low Carbon Innovation |
| Evaluation | Environmental Effects Evaluation |
| IK | Indigenous Knowledge |
| IPD | Initial Project Description |
| km | kilometre |
| m | metres |
| MA | Mines Act |
| Plan | Indigenous Engagement Plan |
| Project | New Polaris Project |
| TOR | Terms of Reference |
| t | Tonnes |
| tpd | Tonnes per day |
| tpy | Tonnes per year |
| TRTFN | Taku River Tlingit First Nation |
| SO ₂ | Sulfur dioxide |
| VC | Valued Components |

Glossary

| | |
|------------------|---|
| Affected Parties | A party such as an Indigenous nation, organization or government, and individual occupying land for traditional purposes, a private landowner, or lease holder. |
| Engagement | The communication and outreach activities undertaken with affected parties prior to and during the operation of the project. |
| Engagement Plan | A document that clearly describes how, when, and which engagement activities will occur with affected parties and parties during the duration of the project. |

1 Introduction

Canagold Resources Ltd (Canagold) is redeveloping the former Polaris Taku Mine, operated intermittently between 1937 and 1951. The New Polaris Project (the Project) is a proposed underground gold mine that will operate at an estimated 1,000 tonnes per day (tpd), producing on average approximately 365,000 tonnes per year (tpy) of ore. Exploration at the site is ongoing, and current estimates suggest the mine will have an approximately 10-year production life. However, the mine's production life could be extended as the limits of the orebody have yet to be determined. The Project site is located on the west bank of the Tulsequah River in northwestern British Columbia (BC), approximately 100 km south of Atlin, BC, and near the BC-Alaska border. The Project will be reviewed under the British Columbia (BC) *Environmental Assessment Act* (BC EAA) (SBC 2018, c 51). More information on the Project is described in Section 2.

Canagold is committed to managing the effects of its business within the communities in which it operates. Canagold has held the New Polaris property since the early 1990s and previous engagement has occurred primarily with Taku River Tlingit First Nation (TRTFN) and potentially Affected Parties (i.e., government agencies and regulators, stakeholders, and the public). Engagement has been taking place in scale relative to the level of exploration and clean up activity at the site. From 2006 to 2021 little activity took place at the site therefore engagement with Affected Parties was also limited. With the resumption of exploration drilling in 2021, engagement has become more frequent, focused, and directed. More recent engagement activities have included the sharing of project updates, plans, permit applications, meetings, and on-site visits along with monitoring, and field studies. Canagold recognizes the importance of conducting early engagement with Affected Parties and the benefits that come to a project from meaningfully identifying and incorporating input received into project planning and design. As such, Canagold has developed this Engagement Plan "Plan" that will:

- define Canagold's guiding objectives, and objectives for Early Engagement as defined by the British Columbia Environmental Assessment office (BC EAO), and those proposed for the Affected Parties
- summarize engagement efforts of Canagold and feedback from Affected Parties received to date
- guide its engagement contacts, methods, activities, and interactions with Affected Parties through the Early Engagement Phase of the Environmental Assessment (EA)
- meet the defined objectives of the BC EAA requirements.

The Plan is designed to be flexible and will be refined, as required, to meet the evolving priorities and objectives of Canagold, Affected Parties, and other interested parties as the Project advances into the EA process. This also applies to adapting engagement methods specific to COVID-19 or other safety/health related considerations.

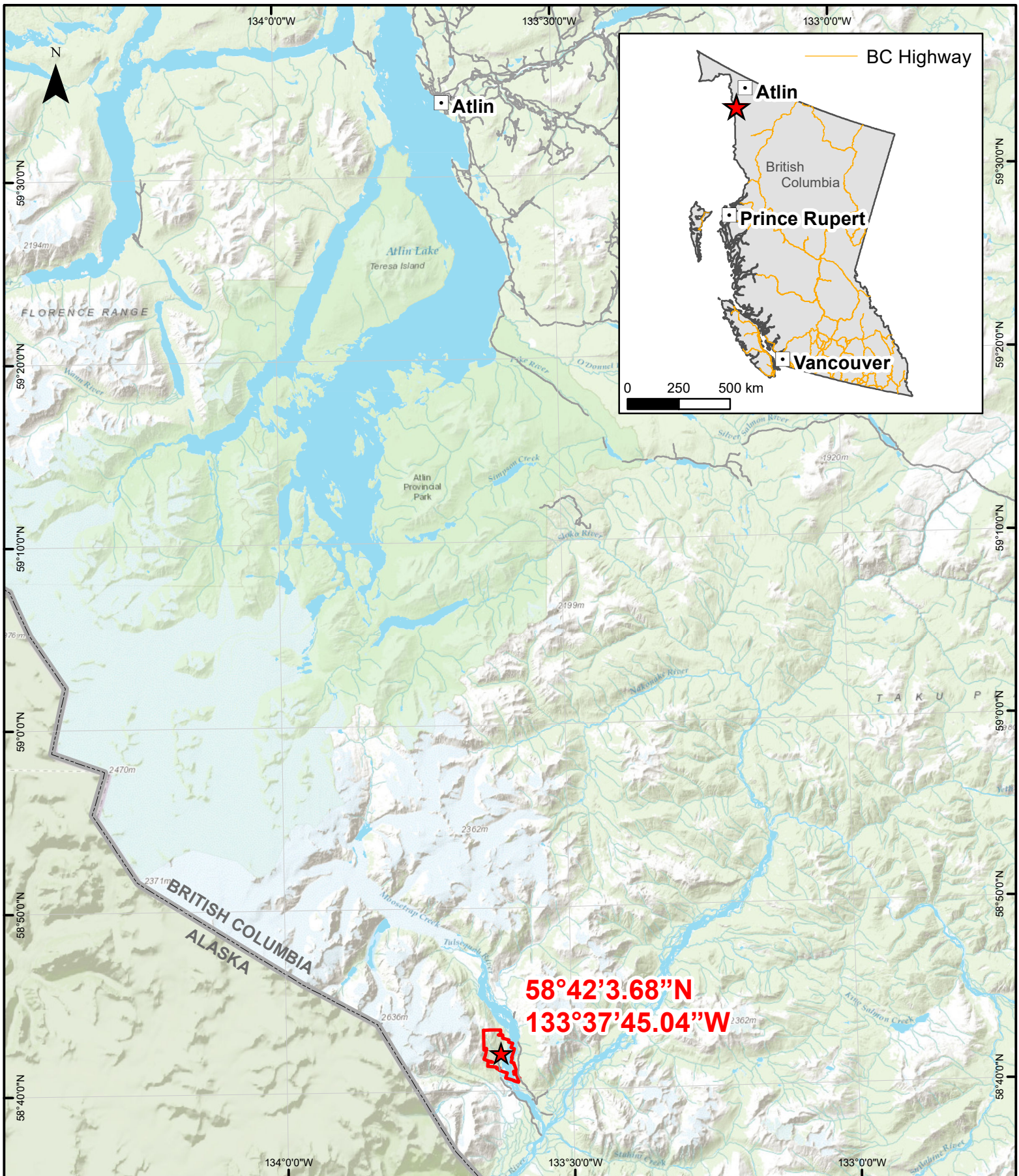
The Plan includes the following sections:





- **Section 2** – Project Description Overview
- **Section 3** – Purpose
- **Section 4** – Early Engagement
- **Section 5** – Early Engagement Identification and Analysis
- **Section 6** – Indigenous Nations Engagement
- **Section 7** – Regulatory Engagement
- **Section 8** – Public and Stakeholders Engagement
- **Section 9** – Plan Milestone Summary

2 Project Description Overview

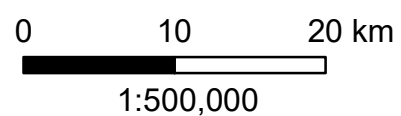
The proposed Project is in northwestern British Columbia approximately 100 km south of Atlin, BC and 60 km northeast of Juneau, Alaska, United States on the west bank of the Tulsequah River (see Figure 2-1). The proposed Project site is located within the Taku River Tlingit First Nation (TRTFN) Traditional Territory.


The Project is a 1,000 tonnes per day (tpd) underground gold mine and is the redevelopment of a former mine and town site, previously known as the Polaris Taku mine, that operated intermittently between 1937 and 1951. The Project will utilize the historical mine site and infrastructure as much as possible. The Project will operate year-round for approximately 10 years.



-  Canagold New Polaris Gold Mine Site
-  Mineral Tenure Outline
-  Atlin, BC
-  Roads

**Figure 2-1 Location Map
New Polaris Gold Mine**



 **CANAGOLD**

NAD83 UTM Zone 8N
 Map Date: 2/27/2023
 Project Location NTS Mappsheet: 104K/12
 Created For 8.5 x 11 inch Paper Size
 Background Layer: ESRI 2023-02-15

2.1 Project Components

The Project components, summarized from the draft Initial Project Description (IPD), are included in Table 2-1.

Table 2-1 Summary of Project Components

| Component | Description of Component and Associated Activities |
|------------------|--|
| Site Preparation | <ul style="list-style-type: none"> Clearing of previously developed ground and overgrowth. Clean up and dispose of remnants from historic operations. |
| Airstrip | <ul style="list-style-type: none"> New airstrip. |
| Roads | <ul style="list-style-type: none"> The existing site road network has not been actively maintained since the mine closure in 1951 and is in varying states of disrepair. A combination of new road works as well as upgrading of existing roads is required. Where possible the new roads are designed to follow existing alignments to reduce costs and footprint, lessening potential environmental effects. Tote road to Barge Landing: An approximately 10 km tote road is needed to transport materials/equipment to the mine site from the barge landing site. The majority of the planned tote road follows an old tote road route. Approximately 2.5 km would be new cut/fill construction on the hillside west of Whitewater Creek. The proposed tote road would require crossing of approximately six drainages and small creeks. Tote road to Combined Storage Facility: A tote road between the mine site and the waste rock and tailings Combined Storage Facility (CSF) is required to facilitate transport of dry tailings from the mill. Culverts to convey surface drainage may be required depending on the CSF location. |
| Aggregate Supply | <ul style="list-style-type: none"> All aggregate supply would be locally sourced to meet infrastructure needs as required. A gravel borrow pit area is proposed east of the mine site to supply aggregate for infrastructure needs (e.g., roads and airstrip and site concrete needs during construction). |
| Barge Landing | <ul style="list-style-type: none"> Given the remote location of the mine, some construction materials and bulk operating supplies are proposed to be transported up the Taku River, through Alaskan waters. A Barge Landing site would be located on the north side of the Taku River, near the confluence with the Tulsequah River, approximately 10 km south of the mine site. The proposed barge landing site is designed to accommodate docking of barges, and includes a small office trailer, genset, diesel fuel tank, temporary storage area for supplies and container handler and/or mobile crane. |
| Underground Mine | <ul style="list-style-type: none"> Access to the underground mine is planned via a new ramp to be installed starting close to the location of the existing New Polaris portal. The existing underground mine is currently flooded and would require progressive dewatering during advancement of the new ramp. New services include mine ventilation, water and electrical services, pumps, geotechnical ground support machinery, haulage equipment, compressed air, mine lighting, and refuge stations. These services would be installed as the excavation of the ramp progresses. |
| Process Plant | <ul style="list-style-type: none"> Ore brought above ground from the mine would be processed at a process plant at a rate of approximately 1,000 tpd. The ore is processed through crushing and grinding and then the gold bearing material is concentrated and then the gold is extracted from the crushed rock through a chemical treatment process. |

| Component | Description of Component and Associated Activities |
|---|--|
| | <ul style="list-style-type: none"> • About 60% of the tailings from the processing plant would be disposed of in the CFS (see below) with the remaining 40% being used for backfilling underground mining excavations. • The Paste Backfill Plant is for producing a mixture of thickened tailings and cement for backfilling mined out portions of the underground mine and would be located at the Process Plant. |
| Tailings and Waste Rock Combined Storage Facility (CSF) | <ul style="list-style-type: none"> • Mining activities in the underground mine results in the generation of waste rock which is hauled from underground, and deposited with the tailings at a CSF. • Tailings generated during the processing activities are separated into two streams: <ul style="list-style-type: none"> ○ About 60% of the tailings would be thickened at the process plant and filtered to a semi-dry state then transported to the CSF via haul truck for co-disposal with mine waste rock. ○ The remaining 40% of the thickened tailings are pumped underground and placed in mined out voids(stopes) that were generated during the underground mining activities to help with ground support. • To protect the surrounding environment from risk of environmental effects, the CSF would be geotechnically prepared and lined. Tailings and waste rock are placed and spread in layers that are sloped to manage water runoff and perimeter berms are constructed to minimize contact water. Ditches are excavated around the facility to collect seepage water and direct it to a lined settling pond that feeds into a water treatment plant designed to treat the water to acceptable concentrations before recycling or discharge to the environment. At closure, a geotechnical and topsoil cover is placed over the entire facility to encapsulate the tailings and waste rock. |
| Fuel Storage and Distribution | <ul style="list-style-type: none"> • Diesel fuel would be stored on-site in a bulk tank farm, with a total capacity of approximately 8,000,000 to 10,000,000 L. An earth berm lined with an impermeable membrane would be constructed around the tank farm to provide secondary containment. Fuel would be distributed around the site by tanker truck. Smaller “day tanks” (situated in secondary containment) would be located at various locations throughout the site to supply fuel for equipment and power generation as required. |
| Explosives Storage | <ul style="list-style-type: none"> • Excavation of the underground mine requires use of explosives. A secure gated facility would be used for explosives storage and would be comprised of 40-foot long shipping containers. To ensure safe storage of the explosives, each container surrounded by an earth berm. |
| Buildings | <p>Construction and operations of the proposed mine would require construction of several buildings. These buildings are proposed to either be prefabricated trailer units, or refurbishment of existing buildings, or both, and include:</p> <ul style="list-style-type: none"> • A camp for housing up to 150 workers • An administration office • A mine dry, including showers, washrooms, and laundry facilities. <p>Additional buildings include:</p> <ul style="list-style-type: none"> • Assay building, where the purity of the mined metals are tested. This is expected to be a prefabricated facility that would be placed adjacent to the mill building. • Maintenance building, that would be constructed using steel frame on a concrete slab with insulated cladding. • Warehouses, that are constructed using fabric structures placed on concrete slabs. |
| Utilities and Services | <ul style="list-style-type: none"> • Communications facility, including satellite-based internet and surface telephone/radio communication system, as well as a specialized communication system for the underground mine to enable communication with the surface crews. • Compressed Air Plant and Compressors that supply the underground operations, mill and surface operations with a compressed air supply. |

| Component | Description of Component and Associated Activities |
|--|---|
| | <ul style="list-style-type: none"> Domestic Waste Disposal facility for the disposal of domestic, sanitary, and other waste generated by the camp and other site facilities during operations. Waste would be incinerated on site using a skid mounted diesel fueled incinerator. Ash generated from incineration would be buried in an approved landfill area. Non-combustible and hazardous waste would be flown to Atlin, BC or Whitehorse, YT for proper disposal. |
| Limestone Quarry | <ul style="list-style-type: none"> A limestone quarry would be excavated to provide limestone for the processing plant. |
| Water collection, treatment and settling | <ul style="list-style-type: none"> Mine water discharge and contaminated surface water would be collected in settling ponds and treated as needed to achieve permitted discharge quality prior to discharge. |

SOURCE: SCHULTE ET AL 2019

2.2 Preliminary Engagement

In the past several years, Canagold has remained focused on increasing the consistency and level of detail of engagement activities with TRTFN regarding the proposed Project, site activities, and opportunities for meaningful involvement and participation. Canagold has:

- Provided ongoing permit applications (e.g., Notices of Work, DFO, AIA, others) to TRTFN in advance of submission to the regulator
- Invited TRTFN to participate onsite during archaeological investigations and environmental field studies related to baseline activities
- Provided draft reports to TRTFN for review and comment
- Signed the Hà khustiyxh / Our Way Agreement.

Canagold provided TRTFN a draft Initial Project Description (IPD) and draft Engagement Plan for review and comment. TRTFN has provided their initial input and, as a result, Canagold has:

- Revised the TRTFN summary of engagement table; engagement methods and considerations; and updated contacts for TRTFN, including potentially underrepresented groups, Stakeholders and Government Agencies, in the Engagement Plan
- Accepted TRTFN input, mostly editorial in nature, in the IPD.

Future comments from TRTFN will be meaningfully considered and addressed by Canagold. Input will be included in the Summary of Engagement, to be prepared during the Early Engagement phase, and in Canagold's Detailed Project Description (DPD).

Canagold has worked collaboratively with BC EAO to determine the information requirements to inform their IPD and Engagement Plan preparation and submission.

Canagold has also recently engaged with the Public and Stakeholders to provide Project related information and gather input to inform the Project design and planning. This included hosting an Open House in Atlin, BC in December 2022. Attendees expressed interest in receiving more Project information and further economic development opportunities.

More detailed information on Canagold's engagement conducted to date is provided under each Affected Parties' respective section below.

3 Purpose

This Plan describes the objectives, activities, and approach that Canagold will undertake during the Early Engagement Phase to build an understanding of the Project and to facilitate sharing of information and feedback from Affected Parties. More specifically, this Plan provides an overview of Canagold's principles, objectives, and methods for the Early Engagement Phase of the EA process.

Feedback on the Plan and the IPD will inform the preparation of a DPD addressing the goals, overall objectives, and engagement activities undertaken, as well as the Project design, siting, and alternative approaches to developing the Project. Canagold will seek advice from potentially Affected Parties to help inform the design of subsequent engagement processes and define the preferred means of engagement for the more formalized EAO assessment process.

Canagold is committed to identifying and providing opportunities to Affected Parties to participate in a manner that is meaningful, effective, and practical to them, based on their level of interest, capacity, and language and cultural preferences, along with guidance from regulators. This participation is essential to helping ensure that the Project can benefit from local knowledge and expertise, and that Canagold is aware of and is able to meaningfully address identified impacts, issues, and concerns as the Project advances.

4 Early Engagement

This section describes Canagold’s engagement principles and objectives, methods, and activities during the Early Engagement Phase.

4.1 Canagold’s Engagement Principles and Objectives

Canagold’s principles and objectives are designed to ensure that engagement incorporates the following:

- Identification of Affected Parties, including potentially vulnerable or underrepresented groups that may be affected by or can influence the Project
- Open, transparent, and ongoing dialogue and reporting regarding the Project, including identifying direct and indirect impacts raised by Affected Parties, in particular, Indigenous Nations, and vulnerable or underrepresented groups
- Recognition of historic, cultural, and locally important Indigenous understandings, traditions, and agreements such as Hà khustiyxh / Our Way Agreement
- A willingness to listen to concerns and interests raised by Affected Parties, in particular Indigenous Nations, and to meaningfully consider appropriate avoidance, mitigation, and adaptive management measures identified
- Meaningful opportunities for development of, and participation in, Project-related studies (i.e., environmental, socio-economic, Indigenous knowledge and traditional land use, others)
- Facilitation and participation in community meetings to discuss the Project
- Tracking of all comments and responses to Affected Parties
- Identifying a range of potential Project-related opportunities for Affected Parties to benefit from and contribute to the Project.

4.2 Engagement Methods and Activities

Canagold will implement its principles and objectives through multiple engagement methods and activities, as discussed and identified by Affected Parties. Examples of methods and activities with an approximate frequency and timing for Affected Parties, in 2023, are included in Table 4-1.

Table 4-1 Engagement Method and Activities

| Engagement Methods | Activities Description | Frequency and Timing for Affected Parties |
|-------------------------|---|---|
| Communication Materials | Information Factsheets: will be prepared and shared to provide information and updates including areas of interest raised by Affected Parties. | <ul style="list-style-type: none"> • One Info Factsheet in March and April |
| | PowerPoint Presentations: will be prepared and facilitated to deliver information (e.g., Project components, location, EA process). The presentations will be tailored (i.e., level of detail, duration, and information) as required to meet the needs of Affected Parties. | <ul style="list-style-type: none"> • During meetings • As needed onwards |
| | Letters: will be prepared to introduce the Project and provide updates to Affected Parties. | <ul style="list-style-type: none"> • One letter/e-mail prior to/at the start of Early Engagement Phase (March) |

| Engagement Methods | Activities Description | Frequency and Timing for Affected Parties |
|--------------------------------|---|---|
| | <p>Canagold Website: will provide updated information on the Project.</p> | <ul style="list-style-type: none"> • One major update in March/April • As needed onwards (e.g., milestones, EPPs updates, design updates, planning updates, others) |
| | <p>Advertisements / Media releases: Canagold will use media releases and advertisements in local media publications (i.e., Atlin Whisperer and Atlin Community Facebook Page(s)) to share information regarding the Project and to encourage community participation and bring awareness of its engagement activities.</p> | <ul style="list-style-type: none"> • Up to three starting in March (to May) |
| | <p>Printed Media: will be prepared to facilitate access to information by Affected Parties at meetings and community events. These include, but are not limited to posters, flyers, figures, maps, and newsletters.</p> | <ul style="list-style-type: none"> • Based on Open Houses and Meetings |
| | <p>Videos and Renders: video footage and 3D renders will be prepared and shared to help Affected Parties build an understanding of the Project and some of the potential effects.</p> | <ul style="list-style-type: none"> • April |
| Activities | <p>Community and Stakeholders meetings: one-on-one or group sessions will be coordinated and facilitated to discuss Project related information and deliverables (i.e., EAO process, Project description, update meetings, anticipated works) and solicit input from Affected Parties.</p> | <ul style="list-style-type: none"> • March-May • As needed onwards |
| | <p>Open houses: will be coordinated and facilitated to introduce the Project and discuss the EAO process. Input from the Affected Parties will be gathered to inform the Project's design and planning process.</p> | <ul style="list-style-type: none"> • One in March/April • As needed onwards |
| | <p>Knowledge holders meeting: will be coordinated with TRTFN to discuss and gather for the Project. A translator for Lingít language speakers may be required.</p> | <ul style="list-style-type: none"> • One in March/April/May • As discussed with TRTFN onwards |
| | <p>Workshops and technical meetings: individual or group sessions will be coordinated and facilitated to understand the interests and address the concerns of Affected Parties. Input will be solicited to inform the Project's design and planning process.</p> | <ul style="list-style-type: none"> • One in March/April • As needed onwards |
| | <p>Feedback Forms: will be administered at public meetings to gather information from Affected Parties regarding their priorities, interests, concerns, and preferred methods of engagement.</p> | <ul style="list-style-type: none"> • One in March/April • After each engagement activity |
| | <p>Site Visits: will be coordinated and facilitated to help Affected Parties better understand the Project and its potential effects.</p> | <ul style="list-style-type: none"> • As requested/needed |
| Documentation and deliverables | <p>Early Engagement Log: will be maintained that contains all communications with each Affected Party to date. A summary of engagement efforts to date will be provided upon EAO's request and as part of the Early Engagement Phase.</p> | <ul style="list-style-type: none"> • To be updated weekly |
| | <p>Comment and Response tracker: will be maintained to ensure that feedback provided by the Affected Parties is considered in the preparation of the DPD.</p> | <ul style="list-style-type: none"> • To be updated weekly |

| Engagement Methods | Activities Description | Frequency and Timing for Affected Parties |
|--------------------|--|--|
| | Action Engagement tracker: will be prepared and maintained to ensure the accurate tracking and follow up of actions and commitments made during the Early Engagement Phase. | <ul style="list-style-type: none"> To be updated weekly |
| | Initial Project Description: The IPD will be discussed to provide relevant Project information to the Affected Parties to build an understanding of the Project, and to identify potential interests and concerns to be considered if the Project advances to the next phase of the EA. | <ul style="list-style-type: none"> February/March/April |
| | Detailed Project Description: Indigenous Nations will be contacted to gather feedback to inform the DPD and to confirm how they would like to be involved. The draft DPD will be shared with Indigenous Nations for review and comment prior to submission to the BC EAO. | <ul style="list-style-type: none"> April/May |
| | Engagement Plan Revisions: The Plan is flexible and will be updated based on feedback and guidance provided by Affected Parties and in accordance with the EA process. Any updates to the Plan will be communicated promptly to Affected Parties via email, letters, and phone calls. | <ul style="list-style-type: none"> As updates are completed |

Hard copies of materials will be mailed out to Atlin residents and distributed to the Atlin Lake Grocery Store – Food Basket and Atlin Canada Post Office. Canagold understands that many residents do not accept additional flyer mail, as such a Project email list will be created and used to distribute information electronically to those interested.

The engagement methods and activities will vary depending on the applicable regulatory requirements and the availability and the actual level of involvement and input from Affected Parties. Also, the context for engagement and consultation activities is expected to vary with respect to:

- The Parties identified and perceived interests
- Potential effects of the Project on stakeholders and specifically on Indigenous Nations’ legally established rights, and interests
- The historical relationship between the Parties and the Project (i.e., past owners and development)
- The Parties’ interest, ability, and capacity to participate in Project engagement and consultation activities, as well as influence on the Project
- Language and cultural preferences/protocols of each Affected Parties.

4.2.1 Specific Engagement Considerations

Engagement methods will be implemented to ensure effective participation of underrepresented and vulnerable groups includes the following:

- Plain language materials will be available and distributed in printed and digital format
- Meetings will be hosted in accessible venues with facilities to accommodate people with visual, hearing, and mobility impairments. Rides to the venue may also be supported by Canagold
- Childminding will be available during group meetings to ensure meaningful participation of attendees. A Canagold representative will be in attendance to ensure a safe space for any accompanying children and to confirm that all attendees have left safely

- Meeting times will be coordinated with underrepresented and vulnerable groups.

Canagold will remain adaptable to ensure that effective methods of engagement are incorporated, based on the feedback and needs raised by Affected Parties, and specifically, underrepresented, and vulnerable groups.

Specific engagement methods and activities to ensure meaningful participation of Indigenous Nations include the following:

- Plain language materials will be available and distributed in printed and digital format
- A Lingit language translator will attend group meetings to facilitate communication with non-English speakers
- Meetings will be held in familiar, centrally located, and accessible venues with facilities to accommodate people with visual, hearing, and mobility impairments. Rides to the venue may also be supported by Canagold
- Childminding will be provided during group meetings to ensure meaningful participation of attendees. A Canagold representative will be in attendance to ensure a safe space for any accompanying children and to confirm that all attendees have left safely
- Meeting times will be coordinated with Indigenous Nations during dates/times that fit with other cultural pursuits to encourage greater participation.

TRTFN has multiple methods that will be used to deliver information to its members, including hard copy distribution door to door, email, mailing engagement packages and hybrid meetings.

Specific engagement methods and activities that Canagold plans to implement in relation to the Affected Parties, during the Early Engagement Phase, are outlined in:

- Indigenous Nations Section 6.2.
- Provincial and Federal Government – Agency and Regulatory Section 7.2
- Public and Stakeholder Section 8.2.

5 Early Engagement – Identification and Analysis

To help ensure early and meaningful engagement is conducted with potentially Affected Parties, Canagold developed an initial list of:

- Indigenous Nations using BC's Consultative Area Database (CAD) search tool
- Other Affected Parties using BC's Area of Interest Evaluation tool and through a review of previous engagement efforts on the New Polaris property, community websites, and publicly available government agencies contacts.

Details of the identified Affected Parties are provided in Sections 6, 7 and 8. As noted previously, Canagold will engage with Affected Parties in a manner that is respectful and appropriate to their needs and level of interest in the Project and, in some cases, the degree to which they may be impacted by the Project.

6 Indigenous Nations Engagement

Based on the search results described in Section 5, TRTFN was identified as the most proximal Nation that has potential interests in, or who is potentially affected by the Project. To date, it is Canagold's understanding that TRTFN is the most interested and affected Indigenous Nation and will require a high level of engagement and consultation throughout the Early Engagement Phase, and the associated EA process.

Additional Indigenous Nations

Canagold is aware that additional Indigenous Nations, including the Tahltan, may have interests in the Project. The Tahltan's Traditional Territory occurs in the general vicinity of the Project. Through Canagold's ongoing engagement and guidance from BC EAO, additional Indigenous Nations will be appropriately engaged based on their level of interest and the potential for Project-related impacts.

As the Project is proposing to barge materials through Alaska on the Taku River, Indian Tribes in Alaska may also have Project-related interests and Canagold will support BC EAO's direction and efforts regarding engagement and consultation, where appropriate.

Canagold will seek to identify and understand the interests of the Indigenous Nations, in particular TRTFN, to inform the Plan's objectives, methods, activities, Indigenous Knowledge and overall nature of engagement for the Early Engagement Phase, described below. A summary of protocols, agreements, and rationale for including them in this Plan, as currently understood by Canagold, is included in Table 6-1. Following this, Section 6.5 includes details on TRTFN's key contacts, agreements, engagement activities to date and planned/ongoing engagement. Similar information for other Indigenous Nations will be developed, when and where appropriate.

6.1 Early Engagement Objectives

Based on the engagement principles and objectives identified in Section 4.1, Canagold's specific objectives for engagement with Indigenous Nations are to:

- Engage early and often in relation to the identification of Project-related impacts, interests, and concerns, so these can be taken into consideration in study design and Project planning
- Provide relevant Project information in a timely and accessible manner and determine how Indigenous Nations wish to engage based on their cultural preferences, capacity, level of interest, and priorities
- Provide capacity funding to potentially impacted Indigenous Nations to assist and facilitate their participation through the Early Engagement Phase
- Identify and provide appropriate opportunities for Indigenous Nations and Canagold to collaborate to ensure a mutually beneficial engagement process
- Appropriately consider and integrate Indigenous Knowledge, interests, and concerns of Indigenous Nations to inform the development of the DPD and subsequent Project-related documents and materials.

6.2 Engagement Methods and Activities

Canagold's anticipated types of engagement activities include, but are not limited to, the following:

- Coordinating and facilitating meetings with Project representatives and Indigenous Nations to provide Project-related information and solicit their input to inform Project design and planning
- Providing updates (i.e., emails, letters, phone calls, PowerPoint presentations) to Indigenous Nations regarding proposed Project activities, including methods, location (i.e., maps, figures, 3D renders, etc.), and what potential impacts to lands and resources may be
- Obtaining or discussing Indigenous Nations' concerns, which may include information about Aboriginal Interests in relation to the proposed activity
- Coordinating and facilitating meetings with Indigenous Nations to discuss possible mitigation options to address potential impacts to Aboriginal Interests
- Keeping and maintaining engagement records of all Project-related communications, meetings, and actions resulting from the Early Engagement Phase.

6.3 Indigenous Knowledge

Canagold recognizes the importance of including Indigenous Knowledge in an EA and is aware that Indigenous Knowledge can enrich an understanding of the biophysical environment in addition to increasing an understanding of the social, cultural, economic and health priorities of Indigenous communities.

Canagold will work with Indigenous Nations to develop an understanding of their Indigenous Knowledge and Current Land Use in and around the Project area so that this understanding can be used to enhance and shape Project design and planning. Canagold will establish a shared understanding with Indigenous Nations about how Canagold and the Project will work with Indigenous Knowledge regarding its ownership, protection, use and archiving.

Prior to the initiation of any Indigenous Knowledge related engagement, Canagold will initiate study planning and discussions with interested Indigenous Nations to:

- Present a detailed draft workplan for review, comment, and collaboration. This draft workplan will support discussion and refinement of the proposed Indigenous Knowledge Study approach. Such details anticipated to be presented include how prospective participants will be identified, what information will be presented at community research meetings, and/or whether the community anticipates a community-preferred consultant or community participant to facilitate or support the proposed engagement.
- Identify availability and use of a community Indigenous Knowledge database.
- Facilitate the development of primary data research protocols (such as informed consent form) to support and respect the confidentiality of any information gathered through engagement.

6.4 Indigenous Nations

Information regarding the identified Indigenous Nations, a rationale for their inclusion, any associated protocols, and agreements with Canagold and any known government to government agreements, are outlined in Table 6-1 below.

Table 6-1 Indigenous Nations Rationale, Protocols, and Agreements

| Indigenous Nations | Rationale | Agreements | Engagement Protocols |
|---|---|---|--|
| Taku River Tlingit First Nation (TRTFN) | <p>The Project Area is located within TRTFN Traditional Territory.</p> <p>Potential for sites of archaeological and heritage importance within the Project Area</p> <p>Project Area may overlap with current and Traditional Land Use areas, activities and otherwise inform the collection of Indigenous Knowledge</p> | <p>TRTFN</p> <ul style="list-style-type: none"> Hà khustiyxh / Our Way Agreement – 2003 TRTFN Interim Agreement on Forest & Range Opportunities – 2007 TRT Strategic Engagement Agreement (Whóoshtin yan too.aat Land and Resource Management and Shared Decision Making Agreement) – 2011 Wóoshtin wudidaa Atlin Taku Land Use Plan – 2011 TRTFN Clean Energy Revenue Sharing Agreement – 2013 TRTFN Mining Policy – 2019 TRT Forest Consultation and Revenue Sharing Agreement – 2022 Hà khustiyxh / Our Way Agreement between TRTFN and Canagold – November 2022 Capacity Funding Agreement related to TRTFN's involvement in the Environmental Assessment process – pending | <ul style="list-style-type: none"> Directed to engage with designated Mining Liaison contact Ongoing engagement with TRTFN designated departments i.e., Lands, Heritage, Environment (Fisheries and Wildlife, and Economic Development) on matters related to their role |
| Additional Indigenous Nations | To be determined during ongoing engagement and as per direction from BC EAO. | | |

6.5 Taku River Tlingit First Nation

TRTFN is based in Atlin, BC, a small, isolated community located in the northwest corner of the province. Atlin's population was 477 in 2016, 18.7% larger than in 2011, (population 402). TRTFN's traditional territory covers an area of approximately 40,000 sq/km in northern BC, Yukon Territories and parts of Alaska (Government of Canada 2017; Taku River Tlingit First Nation 2022).

Information related to TRTFN's key contacts, including contacts to reach potentially underrepresented groups within TRTFN, is provided below in Table 6-2.

Table 6-2 Key Contacts TRTFN

| Contact Name | Title/Position |
|----------------|--|
| Governance | |
| Charmaine Thom | Spokesperson |
| Shirley Reeves | Crow Clan Director |
| Vivian Mahoney | Crow Clan Director |
| Louise Gordon | Wolf Clan Director |
| Administration | |
| Charles Pugh | Atlin Tlingit Economic Limited Partnership Chief Executive Officer /TRTFN Chief Administrative Officer |
| Cyndi Knill | Human Resources/Contracts Manager |

| Contact Name | Title/Position |
|---|---|
| Rebecca Law | Communications |
| Pamela Jim | Administrative Assistant |
| Education | |
| Jorge Buznego | Education Manager* |
| Johanne Brunelle | Support Worker* |
| Joanne Williams | Tlingit Cultural Support Worker* |
| Sandra Jack - Mirhashem | CILR Language Coordinator |
| Latséeni Daakahidi (House of Strength & Wellness) | |
| Jennifer Hearn | Health and Wellness Department Manager* |
| Health and Safety | |
| Daniel Kemping | Community Safety Manager* |
| Tutan Hit (Cultural Centre) | |
| Wayne Carlick | Cultural Centre Coordinator |
| Debra Michel | Cultural Outreach Coordinator |
| Land & Resources | |
| Rodger Thorlakson | Lands Department Manager |
| Jackie Caldwell | Mining Officer |
| Shannon Whelan | Wildlife Coordinator |
| Hannes Schraft | Land Guardian Program Officer |
| Trevor Williams | Lands Guardian Program Liaison |
| Shauna Yeomans | Land Guardian Program Liaison |
| Mark Connor | Fisheries Coordinator |
| Ben Louter | Heritage Archaeologist |
| Governance & Negotiations / Whitehorse Office | |
| Chantelle Schultz | Senior Negotiator - Manager |
| David MacMartin | Treaty Coordinator |
| Other | |
| Trapline Holder (TR0626T018) | Wayne Carlick |

Note: * denotes the contacts who may have access to may liaise with potentially underrepresented groups.

6.5.1 Agreements

Canagold will comply with TRTFN's relevant agreements and policies, including their Mining Policy and the Hà khustiyxh / Our Way Agreement that TRTFN recently signed with Canagold in November 2022.

Mining Policy

TRTFN established a *Mining Policy* in 2019 that provides specific guidance for proponents, including during early engagement activities (Taku River Tlingit First Nation 2019). The purpose of TRTFN's *Mining Policy* is to:

- Ensure that all Mining Activities are carried out in accordance with the Wóoshtin wudidaa: Atlin Taku Strategic Land Use Plan
- Minimize potential risks, impacts, and adverse effects from Mining Activities on TRTFN Rights
- Clarify how the TRTFN will evaluate and respond to proposed Mining Activities; and,
- Establish the terms and conditions under which the TRTFN may provide consent to proposed Mining Activities.

The Atlin Taku Land Use Plan, noted in the bullets above, was developed to support outcomes of the Framework Agreement that TRTFN signed with British Columbia, including a reduction in conflicts between British Columbia and TRTFN over land use and wildlife (Taku River Tlingit First Nation 2011).

The key aspects of the *Mining Policy* and the status of how Canagold is and will continue to comply with it are included in Table 6-3.

Table 6-3 TRTFN Mining Policy and Status

| Policy and Section Number | Status |
|--|--|
| Agree to participate, complete, and execute a TRTFN Hà khustiyxh / Our Way Agreement (Section 6) | Signed November 2022 |
| Provide prior notice of works (Section 5) | Ongoing |
| Share information regarding the proposed Mining Activity with TRTFN in accordance with Section 5 | Ongoing |
| Meaningfully engage with TRTFN regarding the proposed Mining Activity in accordance with Section 5.2 | Ongoing |
| Secure TRTFN consent in accordance with Section 4 including meeting Guiding Principles for TRTFN Decision Making (Section 3) | Consent has been provided for the applicable mining activity, as per the signed Hà khustiyxh / Our Way Agreement (November 2022) |

Hà khustiyxh / Our Way Agreement

Canagold and TRTFN signed Hà khustiyxh / Our Way Agreement in November 2022 and will collaborate to implement and comply with the agreement provisions. The agreement covers Canagold's current exploration activities and site activities including baseline data collection.

Environmental Assessment Capacity Agreement

Canagold and TRTFN are advancing a Capacity Funding Agreement that defines the details of TRTFN's involvement in the EA process. The Engagement Plan could be updated accordingly once these arrangements are finalized with TRTFN.

6.5.2 Engagement Activities to Date

Canagold has been engaging closely with TRTFN on Project-related activities. Table 6-4 provides a detailed overview of Canagold's engagement to date. Below the table is a high-level and initial list of TRTFN's interests and concerns that have been identified from 2019 to date.

Table 6-4 Summary of Engagement Activities (2019 to date)

| Date | Method | Details |
|------------------|--------|---|
| 2019 | | |
| February – April | Emails | Canagold provided TRTFN: <ul style="list-style-type: none"> An update on the Project including resumption of exploration drilling, environmental baseline data collection, and Preliminary Economic Assessment A copy of the 2019 Preliminary Economic Assessment |

| Date | Method | Details |
|---------------------|-----------------------------|--|
| 2020 | | |
| May | Emails | TRTFN provided Canagold their Mining Policy. Canagold provided TRTFN an update on the baseline environmental data collection process and related participation. |
| March – July | Emails | Canagold provided the Project's Notice of Work (i.e., drilling) application, and related documents for approval. |
| July – August | Emails, Meeting (Virtua) | Canagold: <ul style="list-style-type: none"> • Updated TRTFN on the status of Notice of Work permitting and schedule to start drilling in fall 2020 • Sent TRTFN additional information on the Notice of Work and the Salmon Ecosystem Management System for the Project. On August 12, Canagold and TRTFN met to discuss the proposed drill holes and infrastructure. Canagold provided additional maps and information about the Project and schedule. |
| September – October | Emails | Canagold provided TRTFN: <ul style="list-style-type: none"> • An update on the Notice of Work application • A request to further discuss a project-related agreement • Confirmation that BC Ministry of Energy, Mines and Low Carbon Innovation (EMLI) approved the Exploration Permit • Notice of flooding at site has postponed exploration until 2021. |
| November – December | Emails | TRTFN provided details of their communication protocols to Canagold. Canagold updated TRTFN on the status of archaeology permitting and requested TRTFN's participation during Archaeological field work. |
| 2021 | | |
| June – August | Emails | Canagold invited TRTFN to join an upcoming fish collection baseline study. Canagold informed TRTFN of vegetation assessment work (i.e., metals testing, rare plants). An Atlin Tlingit Economic Limited Partnership (ATELP) member participated in the work. |
| July – August | Emails | Canagold provided the draft Archaeological Overview Assessment (AOA) to TRTFN for their review and comments. TRTFN provided comments on the AOA and noted concerns related to the proposed road from the Project and the need for further investigations and protection. Canagold responded to the comments and expressed its ongoing commitment to working collaboratively with TRTFN and for the protection of cultural and archeological sites. |
| August – November | Emails | Canagold provided TRTFN: <ul style="list-style-type: none"> • Water sampling locations and data collected from Nov. 2020 to Feb. 2021 • Results of its exploration works (i.e., drilling) and the potential to extend exploration works at the Project • Drilling activity plans and Management Plan (as required by TRTFN's <i>Mining Policy</i>) • Planned Project activities and ongoing plans, along with information on potential effects and mitigation, reclamation, and monitoring measures to be implemented by the Project • A memo summarizing results of fisheries sampling |

| Date | Method | Details |
|-----------------|----------------------------------|--|
| | | <ul style="list-style-type: none"> Notice that sediment, benthic, and periphyton sampling results will be shared in 2022. |
| December | Meeting (Virtual) and Emails | On December 1, Canagold and TRTFN met to advance project-related agreement discussions. |
| | Email | Canagold re-confirmed its commitment to engage with TRTFN: <ul style="list-style-type: none"> Prior to field work and to arrange a representative to participate On Indigenous Knowledge to help ensure a holistic understanding about past and present occupancy of the area On proposed management recommendations relating to cultural heritage sites identified by the Project. |
| 2022 | | |
| January | Email | Canagold informed TRTFN that the Project's Archaeological Permit was issued. |
| February | Meeting | On February 3, Canagold and TRTFN met to discuss the Project and project-related agreement. |
| February – June | Email | Canagold provided TRTFN: <ul style="list-style-type: none"> Results of the 2021 exploration work Summary of proposed 2022 Project activities and engagement. |
| August | Meeting (Atlin) | Canagold and TRTFN met to discuss the Project, plans to enter the EA process and TRTFN's interests and concerns. |
| September | Email | Canagold provided TRTFN the 2022 Project activities and management plan. |
| October | Site Visit | Canagold held a site visit and five TRTFN representatives attended. Canagold shared information regarding current site activities and its plans to advance the Project into an EA, then feasibility and production. |
| | Meetings (Atlin and Virtual) | On October 23, Canagold met with ten TRTFN members to discuss the Project. On October 24: <ul style="list-style-type: none"> Canagold met with nine members of TRTFN to discuss the Project. Canagold reiterated its commitment to responsible development in accordance with TRTFN's values and way of life. Canagold met with ATELP's senior management team to inform them about the current Project plans. On October 31, Canagold and TRTFN signed the Ha Khustiyxh Agreement which covers the current site exploration activities. |
| November | Open Houses and Meetings (Atlin) | On November 7 Canagold: <ul style="list-style-type: none"> Hosted two open houses at the Tutan Hit Center in Atlin, BC. Project information was shared with TRTFN members and Canagold sought to identify TRTFN's interests, answer questions and gather feedback about the Project. Met with ATELP's senior management to discuss the potential of hydroelectricity for the Project. Visited the carving workshop of a TRTFN member who is a relative of the former caretaker at the New Polaris site to discuss and gather feedback on the Project. |

| Date | Method | Details |
|----------|---|---|
| | Meetings (Atlin) and Open House (TRTFN's Whitehorse office) | On November 8 Canagold: <ul style="list-style-type: none"> Met with TRTFN's Mining and Environmental teams to gather feedback on critical path items to inform the Project design and planning. Hosted an open house at TRTFN's office in Whitehorse to share Project information, identify interests and concerns, and to gather input on the Project. Met with TRTFN's Mining Officer to plan upcoming open houses for Atlin residents and interested TRTFN members. |
| November | Meeting (Virtual) | On November 24, Canagold and TRTFN's Mining Officer met with representatives of BC EAO to discuss the Project and the EA process. |
| December | Email | On December 9, Canagold shared the draft IPD with TRTFN for review and comment. |
| 2023 | | |
| January | Email | On January 10, Canagold shared the draft Engagement Plan with TRTFN for review and comment. |
| February | Email | On February 6, TRTFN provided initial input on the Engagement Plan and IPD. |

Based on Canagold's early engagement activities and a review of recent mining projects in the area where TRTFN participated, an initial list of interests have been identified. Interests will continue to be validated in terms of both of relevance and applicability through ongoing engagement efforts with TRTFN. Further input from TRTFN will be meaningfully considered as both Project planning and the associated assessment processes are advanced. A summary of these interests and details about how Canagold has or will address these interests is included in **Table 6-5**.

Table 6-5 Summary of Initial Interests and Canagold's Approach to Resolve

| Initial Interests | Canagold's Response / Approach |
|-----------------------------|---|
| Protection of water quality | <p>Canagold is focused on protecting water quality at the New Polaris Project during Project works.</p> <p>Ongoing water quality sampling has and will be conducted to ensure no project-related adverse impacts are occurring to the rivers / water courses adjacent to and near the Project.</p> <p>As part of the EA and Project permitting, a water quality monitoring program will be developed. Canagold will continue to share the results of the monitoring reports and draft reports of the monitoring program with TRTFN and other potentially Affected Parties.</p> <p>Rocks at the New Polaris site contain only low levels of sulphides and a high content of carbonates therefore they are not expected to result in acid rock drainage.</p> <p>To mitigate the potential risk for metal leaching associated with tailings and waste rock, the tailings will be filtered and deposited together with mine waste rock in a CSF, that will include berms and liners to prevent any potential release.</p> |

| Initial Interests | Canagold's Response / Approach |
|--|--|
| | <p>Canagold is committed to ensuring TRTFN are represented in site environmental monitoring activities to verify that measures being taken to protect against acid rock drainage and metal leaching are effective in protecting the environment.</p> |
| <p>Protection of fisheries habitat</p> | <p>Canagold is committed to the protection of fisheries habitat proximate to the Project.</p> <p>TRTFN expressed the importance of protecting water quality and fisheries habitat, in particular Whitewater Creek as it a vital creek for salmon. As a result of these discussions with the TRTFN, Canagold will be incorporating a berm along the full length of Whitewater Creek along the operations side to ensure that no deleterious substance enters it from mining and processing operations.</p> <p>Fish and fish habitat baseline information has been collected since 2020 and these data will form assessment components of the EA. TRTFN will be provided baselines and assessments, specifically for sections related to fish and fish habitat for review and comment.</p> |
| <p>Protection of archaeological and heritage resources</p> | <p>TRTFN raised concerns about potentially building road access to the Project from Atlin, BC.</p> <p>As a result of input from TRTFN, Canagold is not planning to build an access road from Atlin to the Project. However, as part of the Project, Canagold is proposing a 10km tote road, with approximately 2.5km of new construction, from the Project site southward to the proposed barge landing location. A tote road is also planned from the site to the CSF.</p> <p>Canagold shared the draft AOA with TRTFN for review and comment and TRTFN participated in the Preliminary Field Reconnaissance that transected the proposed road alignment to the barge landing.</p> <p>Canagold will continue to seek input from TRTFN regarding the footprint, design, and related mitigation of the proposed tote roads during the EA process.</p> |
| <p>Protection of traditional livelihood</p> | <p>Concerns of proposed barging along the Taku River and potential effects to their traditional livelihood (fishing, water use) in the lower Taku River</p> <p>Canagold is discussing with TRTFN the methods and their related interests to further understand their traditional livelihood and related practices with respect to the lower Taku River and the Project and how this information will be integrated into the EA.</p> <p>Further discussion with TRTFN will be conducted to understand impacts to current fishing and water use from proposed barging and other project-related activities, along with the identification of mitigation measures.</p> <p>Electrical power generation alternatives are also being investigated and hydro potential being discussed with TRTFN that may reduce the quantity of diesel fuel that would be barged to site for diesel power generation.</p> |
| <p>Protection of sensitive nesting grounds for birds</p> | <p>Canagold is committed to the protection of sensitive nesting grounds for birds of interest to TRTFN, within the Project and the proposed barge landing area.</p> <p>TRTFN will be provided with environmental baselines and assessments, including wildlife and wildlife habitat, as part of the EA process, for their review and comment. Canagold welcomes participation from TRTFN for on-site field investigations related to birds and their review of environmental management and monitoring plans.</p> |

6.5.3 Anticipated Engagement Activities

Table 6-5 provides an overview of the anticipated engagement activities Canagold will undertake with TRTFN during the Early Engagement Phase of the EA.

Table 6-6 Anticipated Engagement Activities with TRTFN

| Item # | Activity |
|--------|--|
| 1 | Coordinate and facilitate an initial meeting with TRTFN Council and members to introduce the Project, the submission to the BCEAO and the EA process, discuss their preferred means of engagement, and determine TRTFN's level of interest in the Project and related engagement |
| 2 | Coordinate and facilitate meetings with TRTFN Council to identify and discuss specific topics of interest related to the Project, processes, and to gather input to inform subsequent EA phases |
| 3 | Coordinate and facilitate visits to the New Polaris property |
| 4 | Coordinate and facilitate topic-specific meetings to review and solicit input on key regulatory submissions relating to the EA process and the Project |
| 5 | Maintain communication channels to enable open flow of information with TRTFN to identify and address any information requirements and needs |
| 6 | Coordinate and facilitate meetings with TRTFN departments and members to discuss and solicit input to inform the preparation of the DPD |
| 7 | Develop and maintain an engagement log containing all communications with TRTFN for review by BC EAO upon request |
| 8 | Develop and maintain a comment and commitment log |

7 Provincial and Federal Government - Agency and Regulatory Engagement

Canagold recognizes that effective engagement with provincial and federal government agencies and regulators will help to ensure a collaborative, transparent and responsive engagement process throughout the Project, the Early Engagement Phase, and the subsequent EA process.

Canagold has developed an initial list of the provincial and federal government agencies to be engaged as part of the Early Engagement Phase of the EA in Table 7-1 below. Canagold will engage with newly assigned contacts as applicable.

Table 7-1 Key Regulators and Government Agencies Contacts

| Government Agency | Key Contact Name | Role/ Position |
|--|---------------------|---|
| BC Environmental Assessment Office (BC EAO) | Katherine St. James | Project Assessment Director |
| | Iszak Hoyland | Project Assessment Officer |
| BC Ministry of Energy, Mines and Low Carbon Innovation (BC EMLI) | Rosanna Breiddal | Senior Project Lead, Major Mines Office (MMO) |
| | Sean Shaw | Senior, Environmental Geoscientist |
| BC Ministry of Environment and Climate Change (BC ENV) | Amanjit Singh | Project Manager, Mining Operations |
| | Neil Bailey | Authorizations Section Head |
| BC Ministry of Forests (BC MOF) | Paul McNulty | Indigenous Relations Liaison |
| | Christine LaPointe | Senior Advisor, Indigenous Relations (Land and Water Section) |
| Government to Government discussions | Rodger Thorlakson | Co-Chair, TRTFN Lands Manager |
| | Tlell Glover | Co-Chair, Sr. Resource Coordination Officer |
| Unincorporated Community of Atlin, BC | Diane Florence | Administrator, Atlin Community Improvement District |
| | Heather Keny | Atlin District Board of Trade |

Note: Atlin, BC is an unincorporated community that does not have an Official Government (i.e., Mayor, Council, etc.). Canagold will engage with the above listed contacts and other contacts as determined during ongoing engagement. It is understood that specific agency representatives/contacts may change over time due to a variety of factors beyond Canagold's control.

7.1 Early Engagement Objectives

Building on the engagement principles and objectives described in Section 4.1, Canagold's objectives specific to engaging with Provincial and Federal Government Agencies and Regulators are to:

- facilitate and provide relevant Project information in a timely manner
- work collaboratively to identify and address any policy or regulatory requirements, interests, and concerns
- incorporate interests and concerns earlier in the application process to inform the development of the DPD and subsequent Project documents
- identify Project-related permit or approvals requirements to inform the development of a permitting plan as required at a later stage in the EA process.

7.2 Methods and Activities

Canagold will work collaboratively with Provincial and Federal Government Agencies and Regulators to determine their capacity, information requirements and solicit feedback to inform the preparation and contents of this Plan. In addition, Canagold will provide information to regulators and government agencies in a timely and consistent manner through various communication methods including, but not limited to:

- Regular updates to regulators and government agencies via emails, letters, phone calls, PowerPoint presentations, others
- Draft copies of notices and distributions lists to the BC EAO for review and feedback prior to distribution
- Tracking table of all comments provided by Affected Parties during the Early Engagement and Canagold's responses.

7.3 Engagement Activities to Date

Table 7-2 lists the engagement efforts conducted with regulators and government agencies to date.

Table 7-2 Engagement with Regulators and Government Agencies

| Date | Participants | Objective |
|-------------------|---|--|
| April 1, 2020 | EMLI and Canagold | Discuss the M-X permit – exploration – MYAB amendment submitted on March 16, 2020 |
| August 19, 2022 | EAO, Canagold, One-Eighty Ausenco | Introductory meeting to discuss Canagold's engagement approach, and timelines towards submitting draft IPD |
| November 24, 2022 | TRTFN, EAO, EMLI, Canagold, One-Eighty, Ausenco | Follow up meeting to discuss Engagement Plan, timelines, and approach for the draft IPD |
| December 16, 2022 | EAO | Canagold shared an initial draft of the IPD with EAO to seek their feedback |
| January 18, 2023 | EAO | Canagold shared an initial draft of the IPD Engagement Plan with EAO to seek their feedback |

7.4 Anticipated Engagement Activities

Table 7-3 lists the planned engagement to be conducted with regulators and government agencies during the Early Engagement Phase.

Table 7-3 Proposed Engagement Activities with Government Agencies

| Item # | Participants | Objective |
|--------|---|--|
| 1 | Canagold, BC ENV, BC MOF | Discuss baseline programs |
| 2 | Canagold, BC EAO, Affected Parties | Discuss the advancement of the Early Engagement Program to ensure compliance with EAO and Affected Parties' requirements and expectations |
| 3 | Canagold, BC EAO, Affected Parties, IAAC, BC EMLI, BC MOF, BC ENV, others | Support BC EAO to form the Technical Advisor Committee (TAC) and provide information and support as needed |
| 4 | Canagold, BC EAO | Develop and maintain an engagement log of all Project related communications with regulators and government agencies for review by BC EAO upon request |

8 Public and Stakeholder Engagement

Canagold will seek input from the Public and Stakeholders to determine their interests, concerns, and comments about the Project, which will help inform the preparation of the IPD and subsequent EA process.

Canagold has prepared an initial list of members of the public and stakeholders, including underrepresented groups and local businesses who may have potential interests in the Project and may be affected by the Project.

Table 8-1 Key Public and Stakeholders

| Stakeholders and Public | Key Contact Name / Contact Information |
|--|--|
| Atlin Community Improvement District | (250) 651-7499 |
| Atlin Historical Society | (250) 651-7522 |
| Atlin Recreation Centre | (250) 651-7510 |
| Atlin Supportive Living (Seniors)* | (250) 651-7445 |
| BC Ambulance | (250) 651-7595 |
| Big Water Society (Teen Centre)* | (250) 651-2460 |
| Other community-based organizations | TBD based on further Project planning and engagement |
| Fire Department | (250) 651-7666 |
| Guide Outfitters (Skenna/Taku Safari Inc) | (250) 651-7784 |
| Health Centre* | (250) 651-7677 |
| Klondike Heli-Magic Inc.** | Willian Karman, Director |
| Non-tenure holder recreational users | TBD based on further Project planning and engagement |
| Other clubs, environment, and recreation groups | |
| RCMP Detachment | (250) 651-7511 |
| Self-identified members of the public | TBD based on further Project planning and engagement |
| Service BC Centre* | (250) 651-7595 |
| Taku River/T'aku Teix Conservancy | Shauna Yeomans, President |
| Tulsequah Chief Mine (Abandoned Mines Branch, Ministry of Energy, Mines and Low Carbon Innovation) | Lara Fletcher |

Notes: * denotes the contacts who may have access to may liaise with potentially underrepresented groups.

** denotes inclusion of local business.

8.1 Early Engagement Objectives

Based on the engagement principles and objectives identified in Section 4.1, Canagold's objectives specific to Public and Stakeholders engagement are to:

- facilitate and provide relevant Project information in a timely manner
- work collaboratively to identify and address any information requirements, interests, and concerns
- incorporate interests and concerns earlier in the application process to inform the development of the DPD and subsequent Project documents
- identify permits or approvals requirements to inform the development of a permitting plan as required by a later stage in the EA process
- Implement specific methods to facilitate meaningful and active participation of underrepresented and vulnerable groups.

8.2 Engagement Methods

Canagold will implement a number of information sharing and engagement methods to help ensure information is accessible to all audiences based on their level and area of interest, preferred engagement methods, and information requirements. The materials and engagement methods include, but are not limited to:

- Support for and participation in the open house led by the EAO to introduce and provide relevant information about the Project and the EA process
- Coordinating and facilitating meetings (i.e., Community meetings, one-on-one meetings, open houses, workshops, and technical meetings, others) with Provincial representatives, the Public, and Stakeholders to provide Project related information and gather their input to inform Project design and planning
- Providing updates (i.e., emails, info sheets, letters, newsletters, Canagold's website, phone calls, PowerPoint presentations, posters, other communications) regarding proposed activities, including the methods, location (maps), and the potential impacts on lands and resources
- Obtaining or discussing Public and Stakeholders' concerns, which may include information about how the proposed Project may impact identified Public and Stakeholder interests
- Discussing possible mitigation options to address impacts on Public and Stakeholders interests
- Keeping and maintaining engagement records of all Project-related communications, meetings, and actions resulting from the Early Engagement Phase.

8.3 Engagement Activities to date with Public and Stakeholders

Table 8-2 provides an overview of engagement activities, comments received, and Canagold's responses to addressing each comment to date.

Table 8-2 Summary of Engagement Activities with the Public and Stakeholders about the Project

| Date | Activity | Details | Responses / Outcomes |
|------------------|--|--|---|
| 08 December 2022 | Open House (Atlin, BC Recreational Centre) | Canagold coordinated with several Atlin residents to promote and coordinate an Open House. Posters were distributed at key locations in Atlin (i.e., main grocery store, | Attendees (i.e., ATELP; Grocery Store Owner, and area geologist) expressed interest in economic and employment opportunities related to the Project and are |

| Date | Activity | Details | Responses / Outcomes |
|------------------|------------|---|---|
| | | the Recreation Centre and Canada Post office). Canagold facilitated the Open House and provided a Project update (via printed materials and presentation) to the attendees regarding: <ul style="list-style-type: none"> • Exploration works (2021 and 2022) • Anticipated schedule for the EA process and Project timelines • Status and timeline of the Feasibility Study • Proposed Project components (i.e., production estimates and methods, facilities, and support infrastructure) • Potential employment and training opportunities • Anticipated environmental protection and closure measures | interested in receiving more Project information. No concerns were raised by the attendees. Additional open houses and meetings will be held as the permitting process advances. |
| 21 February 2023 | Phone call | Canagold contacted the Service BC Centre to learn about the services portfolio and identify potential underrepresented groups. Service BC Centre staff provided an overview of their services portfolio and noted that their community has a high number of seniors. | Additional meetings will be held as engagement and the EA advances. |

8.4 Anticipated Engagement Activities with Public and Stakeholders

Table 8-3 provides an overview of the engagement activities Canagold is planning to implement with the Public and Stakeholders during the Early Engagement Phase of the EA process.

Table 8-3 Anticipated engagement activities with Public and Stakeholders

| Item # | Activity |
|--------|--|
| 1 | Support and participate in meetings with the Public and Stakeholders to discuss their preferred means of engagement, determine the level of interest in the Project, and related engagement of the Public and Stakeholders |
| 2 | Coordinate and facilitate meetings with the Public and each Stakeholder group to discuss any concerns, topics of interest, and gather input to inform the DPD |
| 3 | Coordinate and facilitate site visits to the New Polaris property and the Project area |
| 4 | Coordinate and facilitate meetings to review and solicit input on key regulatory submissions related to the EA process and the Project |
| 5 | Maintain open information flow and communication with the Public and each Stakeholder group to identify and address any information requests |
| 6 | Develop and maintain an engagement log containing all communications with the Public and each Stakeholder group for review by BC EAO upon request |

9 Plan Milestone Summary

Canagold is committed to meeting the engagement objectives and activities with Affected Parties as set out in this Plan. Table 9-1 summarizes Canagold’s key activities shown as major milestones with anticipated timelines for each in conjunction with the Early Engagement Phase.

Table 9-1 Plan Milestones with Affected Parties

| EA Phase | Activities | Anticipated Timing |
|---|--|--|
| Pre- Application | Coordinate with TRTFN to review the IPD prior to submission to the EAO | Q1, 2023 |
| | Facilitated a meeting with BC EAO to seek an initial review of the draft IPD prior to a formal submission | |
| | Provide Project introduction letters to all Affected Parties | |
| Early Engagement | Submission of the Initial Project Description (IPD) and Early Engagement Phase Plan to EAO | Q1,2023 |
| | Provide letters to Affected Parties notifying of the Initial Project Description and Early Engagement Plan submission and inviting comments in the 90-day period | Q1,2023 |
| | Coordinate and facilitate site visits with Affected Parties to build an understanding of the Project and to help identified potential interests and concerns | Q1/2, 2023 |
| | Maintain open information flow and communication with Affected parties to identify and address information needs and requirements | Ongoing |
| | Coordinate and facilitate (virtual and in-person) meetings to discuss the Project and solicit input on the Project and the EA process | Q1/Q2, 2023 and ongoing |
| | Participate in BC EAO open house and additional Project open houses | Within 90 days of IPD and Engagement Plan submission |
| | Coordinate and present relevant Project information at meetings with Affected Parties, government agencies and regulators | Q1/Q2, 2023 and ongoing |
| | Maintain an engagement log containing all communications with each Affected Party for review by BC EAO upon request | Ongoing |
| | Maintain a comment and response tracker to ensure that feedback provided by the Affected parties is considered in the preparation of the DPD | Early Engagement Phase |
| Public Comment Period on the IPD and Plan | Q2,2023 (Minimum of 30 days) | |

10 References

Government of Canada (2017): Census Profile, 2016. Available online at <https://www12.statcan.gc.ca/census-recensement/2016/dp-pd/prof/index.cfm?Lang=E>, updated on 1/28/2021, checked on 1/28/2021.

Taku River Tlingit First Nation (2011): Wóoshtin wudidaa Wooshtin wudidaa Atlin Taku Land Use Plan. Available online at https://trfn.com/wp-content/uploads/2020/09/Atlin_Taku_LUP.pdf, checked on 11/29/2022.

Taku River Tlingit First Nation (2019): TRTFN Mining Policy. Available online at <https://trfn.com/wp-content/uploads/2020/04/TRTFN-Mining-Policy-2019.pdf>, checked on 7/19/2022.

Taku River Tlingit First Nation (2022): Taku River Tlingit First Nation. Available online at <https://trfn.com/>, updated on 11/29/2022, checked on 11/29/2022.