



CANAGOLD

**Advancing Western Canada's Highest Grade Gold Project
to Feasibility & Permitting**

**CORPORATE PRESENTATION
Q1 2025 | TSX: CCM | OTC: CRCUF**

Disclaimer

Certain statements contained herein regarding the Company and its operations constitute “forward-looking statements” within the meaning of the United States Private Securities Litigation Reform Act of 1995. All statements that are not historical facts, including without limitation statements regarding future estimates, plans, objectives, assumptions or expectations of future performance, are “forward-looking statements”. We caution you that such “forward looking statements” involve known and unknown risks and uncertainties that could cause actual results and future events to differ materially from those anticipated in such statements. Such risks and uncertainties include fluctuations in precious metal prices, unpredictable results of exploration activities, uncertainties

inherent in the estimation of mineral reserves and resources, fluctuations in the costs of goods and services, problems associated with exploration and mining operations, changes in legal, social or political conditions in the jurisdictions where the Company operates, lack of appropriate funding and other risk factors, as discussed in the Company’s filings with Canadian and American Securities regulatory agencies. Resource and production goals and forecasts may be based on data insufficient to support them. Mr. Garry Biles, Canagold President & COO is the Qualified Person for the Company as required by NI43-101.

The Company expressly disclaims any obligation to update any forward-looking statements. We seek Safe Harbour.

Why Invest in CANAGOLD ?

Excellent Relative Valuation Upside Potential

EV per Global Resource Ounce USD \$40.00

Major Shareholder Support

Strong Financial Backing from Sun Valley Investments (48.5%)

Committed to Fund Feasibility/Permitting

Advancing New Polaris to Feasibility with Permitting

Feasibility and Permitting in Progress

Resource (May 2023): 1.0 Moz Au at 12.7 gpt

DPD/EA Filed

Company Led by Experienced Management & Board

Geologists, Engineers and Financiers

*Catalin Kilofliski, CEO
Mike Doyle, CTO*

Garry Biles, President

Colm Keogh, VP Ops

Chris Pharness, SVP Sustainability, Permitting

Strong Local Support

Engagement with Taku River Tlingit First Nation (TRTFN)

Hà Khustiyxh/"Our Way" framework for New Polaris Project

Investor Information



ONE YEAR CHART Jan 6, 2025 | Source: Stockwatch

Core Assets



BRITISH COLUMBIA

100% owned New Polaris Gold Mine in northwestern BC



NEVADA

Portfolio of gold assets



CCM

SHARES OUTSTANDING

173.6 M

RECENT SHARE PRICE

C\$0.30



CRCUF

DSU/RSU

1.5 M/1.4 M

CURRENT MARKET CAP

C\$52.0 M



CANA

OPTIONS

900 K

Top Shareholder: Sun Valley Investments (48.5%)

Analyst Coverage: Taylor Combaluzier, Red Cloud Securities

Experienced Management



Catalin Kilofliski

CEO

25+ years of leadership and extensive expertise in mining, senior management, capital markets, Former Director, Corporate Development for Tudor Gold Corp.



Mike Doyle

M.Sc, M.Eng

Chief Technical Officer

Geologist and engineer with over 35 years global experience. Mining and exploration with Rio Tinto, Inmet, Wardell-Armstrong and Sun Valley Investments.



Garry Biles

P. Eng.

President & COO

Engineer with 40+ years experience. 16 years as General Manager of 4 producing gold mines: Eskay Creek, Seabee, Jolu and Bellavista.



Mihai Draguleasa

CPA

CFO

Formerly with Deloitte and Ernst & Young. Mining related financial work includes due diligence reviews, audits, and tax recoveries projects for large and medium mining companies.



Colm Keogh

BA Sc.

SVP Operations

Professional Mining Engineer for 30+ years. Supporting projects through feasibility, development, operations to closure. Previous work with Billiton Metals, Inco Gold, Barrick Gold Anglo American, Eldorado Gold, others.



Chris Pharness

SVP Sustainability and Permitting

30 years of experience as an Environmental Professional. Proven record of success in community engagement, project permitting, Environmental Assessment, environmental and regulatory compliance. Previous 10 years with Barkerville Gold Mines/Osisko Development Corp.

Board of Directors



Director, Chair
Sofia Bianchi
BA

13 years of board experience in multiple private and public companies. Former Chair of Corporate Governance, Member of Audit, Technical and Remuneration Committees of Endeavour Mining.



Director
Dr. Carmen Letton
PhD

"100 Global Inspirational Women in Mining." P. Eng. with 35 years in the Americas, Australia, Asia, Europe and Africa. Former non-executive director of Endeavour Mining Corp, non-executive director of Gold Fields. Positions with Anglo American, BHP Billiton, Rio Tinto and Newmont.



Director
Andrew Trow
B. Comm.

Chartered Accountant with 15 years in financial and operational restructurings, fund management in special situations, private equity and debt. Former investment manager at BlueCrest Capital Management (UK) LLP.



Director
Mike Doyle
M.Sc, M.Eng
Chief Technology Officer

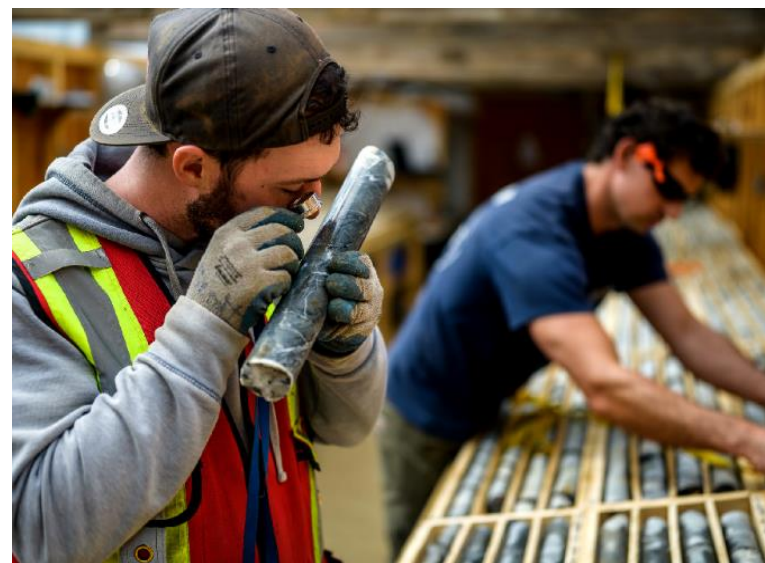
Geologist and engineer with over 35 years global experience. Mining and exploration with Rio Tinto, Inmet, Wardell- Armstrong and Sun Valley Investments.



Director
Kadri Dagdelen
M.Sc. B.Sc.

Colorado School of Mines, Associate Professor and Professor in Mining Former Director of Randgold Resources and held various management roles at Homestake Mining.

NEW POLARIS Advanced High Grade Gold Mine Project



- Production History – 232,000 oz from 1938–42, 1946–51
- Current resources 1.03 M oz Au indicated * (see Resource slide 10)
- High Grade – average 12.75 gpt gold
- Feasibility study advancing with Ausenco Engineering
- Detailed Project Description and Engagement Plan submitted to the B.C. Environmental Office for permitting

NEW POLARIS Location and Access

LOCATION

Northwestern BC, 60 km NE of Juneau, Alaska and 100 km south of Atlin, BC within the Taku River Tlingit First Nation traditional territory – 250 km by road from Atlin to Skagway Port, Alaska

INFRASTRUCTURE

1,500 ft airstrip, 20 person exploration camp with active permit in place

PROPERTY

61 crown grants and 1 claim totaling 2,150 acres (850 hectares), a 760 ft (230 m) deep internal shaft, 2 adits and 11 miles (18 km) of underground mine workings. Active exploration permit from BC gov't.

MINERALIZATION

Mesothermal gold vein system, similar geology and high grade gold mineralization to Red Lake Camp, ON



NEW POLARIS High Grade Gold Resources

New Polaris - Resource Estimate, effective date: April 20, 2023 and Comparison to 2019 PEA

- 2021-22 drill program includes some of the highest grade-width reported in the history of the project, and a build out of parallel zones C9, C10

| | | 2023 Resource | | | 2019 Resource | | | Difference as a Percent: | | |
|-----------|----------|-------------------|--------------|--------------|-------------------|--------------|------------|--------------------------|------------|-------------|
| Class | Cutoff | Tonnage (ktonnes) | Au (gpt) | Au (koz) | Tonnage (ktonnes) | Au (gpt) | Au (koz) | (2023-2019)/2019 | | |
| | (Au gpt) | | | | | | | Tonnage | Au Grade | Au Metal |
| Indicated | 3 | 3,118 | 11.21 | 1,124 | 1,798 | 10.40 | 601 | 73% | 8% | 87% |
| | 4 | 2,965 | 11.61 | 1,107 | 1,687 | 10.80 | 586 | 76% | 8% | 89% |
| | 5 | 2,769 | 12.11 | 1,078 | 1,556 | 11.30 | 565 | 78% | 7% | 91% |
| | 6 | 2,525 | 12.75 | 1,035 | 1,403 | 12.00 | 541 | 80% | 6% | 91% |
| | 7 | 2,270 | 13.45 | 981 | 1,260 | 12.60 | 510 | 80% | 7% | 92% |
| | 8 | 2,049 | 14.09 | 928 | 1,105 | 13.30 | 473 | 85% | 6% | 96% |
| | 9 | 1,814 | 14.81 | 864 | 947 | 14.10 | 429 | 92% | 5% | 101% |
| Inferred | 10 | 1,594 | 15.55 | 797 | 1,639 | 9.50 | 501 | -3% | 64% | 59% |
| | 3 | 1,061 | 8.24 | 281 | 1,582 | 9.80 | 498 | -33% | -16% | -44% |
| | 4 | 926 | 8.93 | 266 | 1,483 | 10.20 | 486 | -38% | -12% | -45% |
| | 5 | 817 | 9.52 | 250 | 1,351 | 10.70 | 465 | -40% | -11% | -46% |
| | 6 | 706 | 10.16 | 231 | 1,223 | 11.20 | 440 | -42% | -9% | -48% |
| | 7 | 603 | 10.78 | 209 | 942 | 12.50 | 379 | -36% | -14% | -45% |
| | 8 | 491 | 11.52 | 182 | 753 | 13.80 | 334 | -35% | -17% | -46% |
| | 9 | 371 | 12.51 | 149 | 653 | 14.60 | 307 | -43% | -14% | -51% |
| 10 | 291 | 13.33 | 125 | 0 | 0.00 | 0 | | | | |



Mineral resources are not mineral reserves and do not have demonstrated economic viability. There is no certainty that all or any part of the mineral resources will be converted into mineral reserves. Resources are reported using the 2014 CIM Definition Standards and were estimated using the 2019 CIM Best Practices Guidelines.

The base case Mineral Resource has been confined by "reasonable prospects of eventual economic extraction" shape using the following assumptions:

- Metal prices of US\$1,750/oz Au and Forex of 0.75 US:\$CDN;
- Payable metal of 99% Au;
- Offsite costs (refining, transport and insurance) of US\$7/oz;
- Mining cost of CDN\$82.78/t, Processing costs of CDN\$105.00/t and G&A and site costs of CDN\$66.00/t.

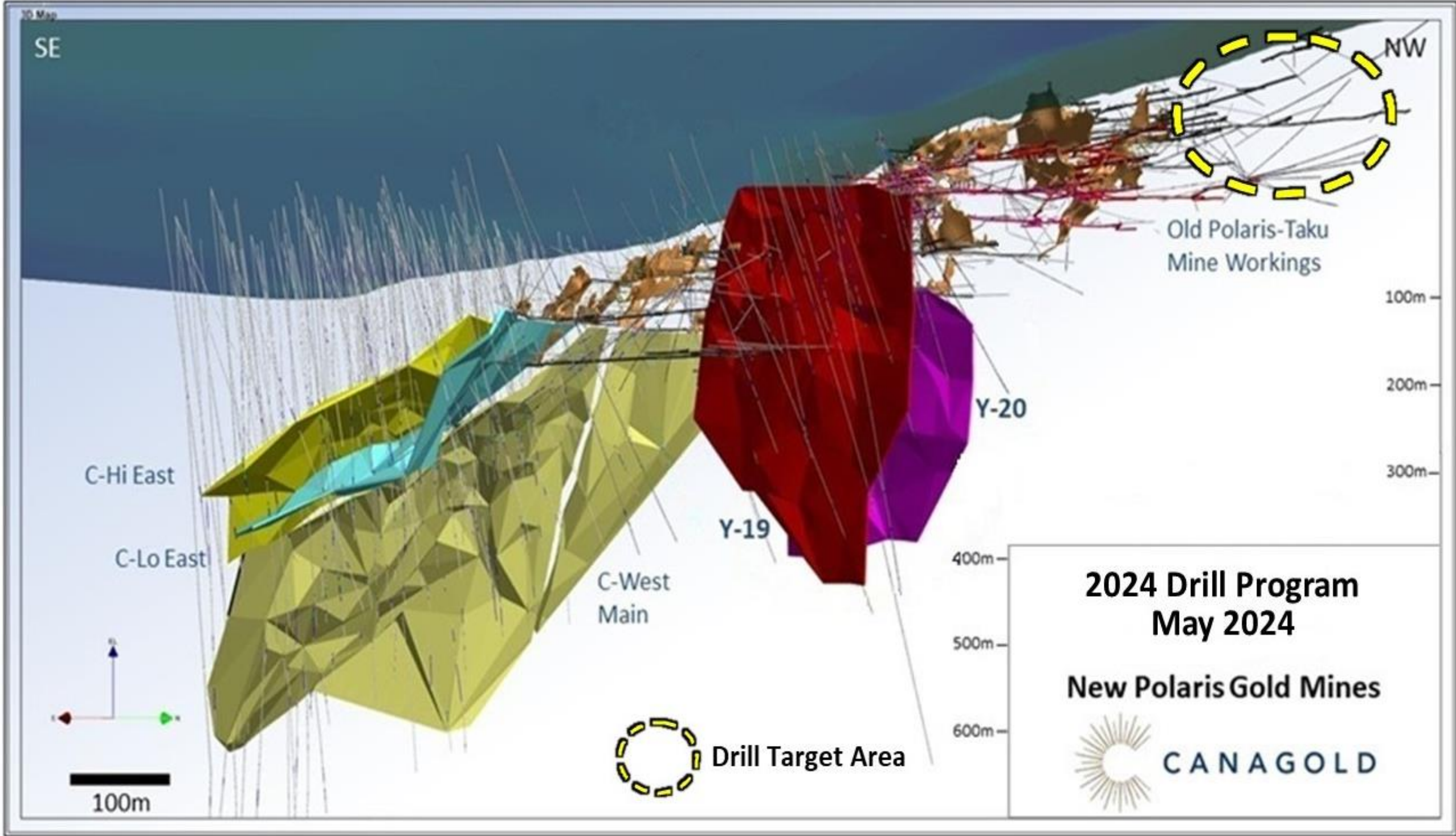
Metallurgical Au recovery of 90.5%; NSR (CDN\$/t)=Au*90.5%*US\$74.72g/t; The specific gravity is 2.81 for the entire deposit; Numbers may not add due to rounding.

NEW POLARIS Exploration

2024 Exploration: 12,000m targeting high-grade historical North Zone

| <i>Historical * Drill Highlights</i> | | |
|--------------------------------------|---------------------------|------------------|
| <i>North Zone/ Hole #</i> | <i>Grade (Au g/t)</i> | <i>Width (m)</i> |
| 475 (1940's) | 26.2 | 4.3 |
| PT9760 (1997) | 16.7 | 1.6 |
| PT9618 (1996) | 11.9 | 22.1 |

*True widths have not been determined. Further drilling is required to determine the mineralized body orientation and true widths.

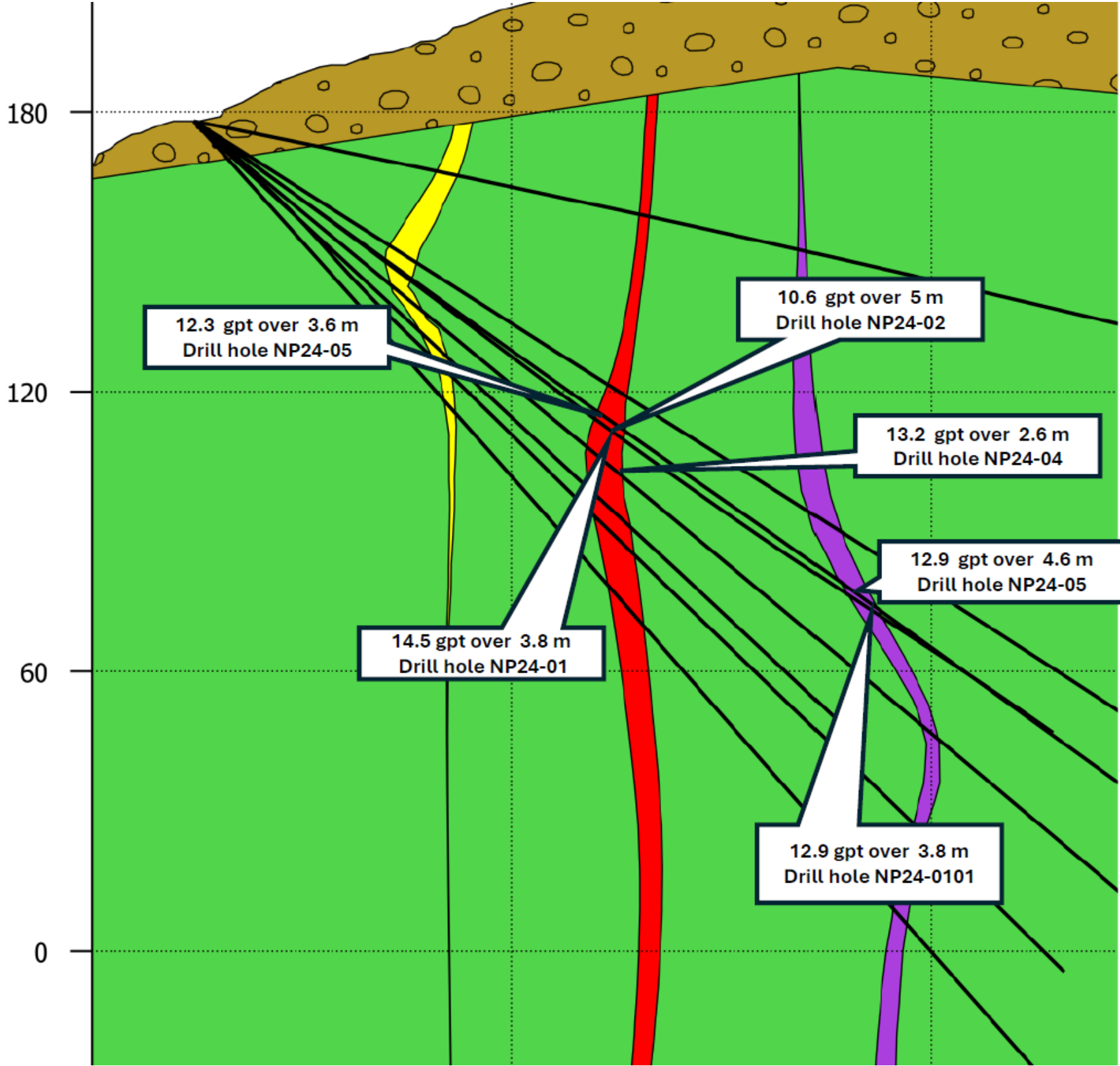


NEW POLARIS Resource Expansion Drill Results

Drill Highlights (July 18, 2024)

| North Zone/ Hole # | Grade (Au g/t) | Width (m) | From (m) |
|-----------------------|-------------------|--------------|-------------|
| NP24-01 | 14.5 | 3.8 | 108.8 |
| including | 21.4 | 1.7 | 108.8 |
| NP24-01 | 12.9 | 3.8 | 206.5 |
| NP24-02 | 10.6 | 5.0 | 109.0 |
| including | 17.6 | 3.0 | 109.0 |
| NP24-04 | 13.2 | 2.6 | 78.7 |
| within | 8.6 | 9.8 | 75.0 |
| NP24-04 | 12.3 | 3.6 | 83.5 |
| including | 15.7 | 1.4 | 83.5 |
| NP24-05 | 12.9 | 4.6 | 230.8 |
| including | 34.5 | 0.8 | 238.1 |
| and | 21.2 | 1.2 | 240.4 |

*Drill intercepts shown are core length as insufficient drilling has taken place to determine the true dip and strike orientation of the veins being intercepted.



- Bedrock
- Overburden
- Upper_Vein_1
- Upper_Vein_2
- Upper_Vein_3

Scale: 1:1,600
 0m 50m

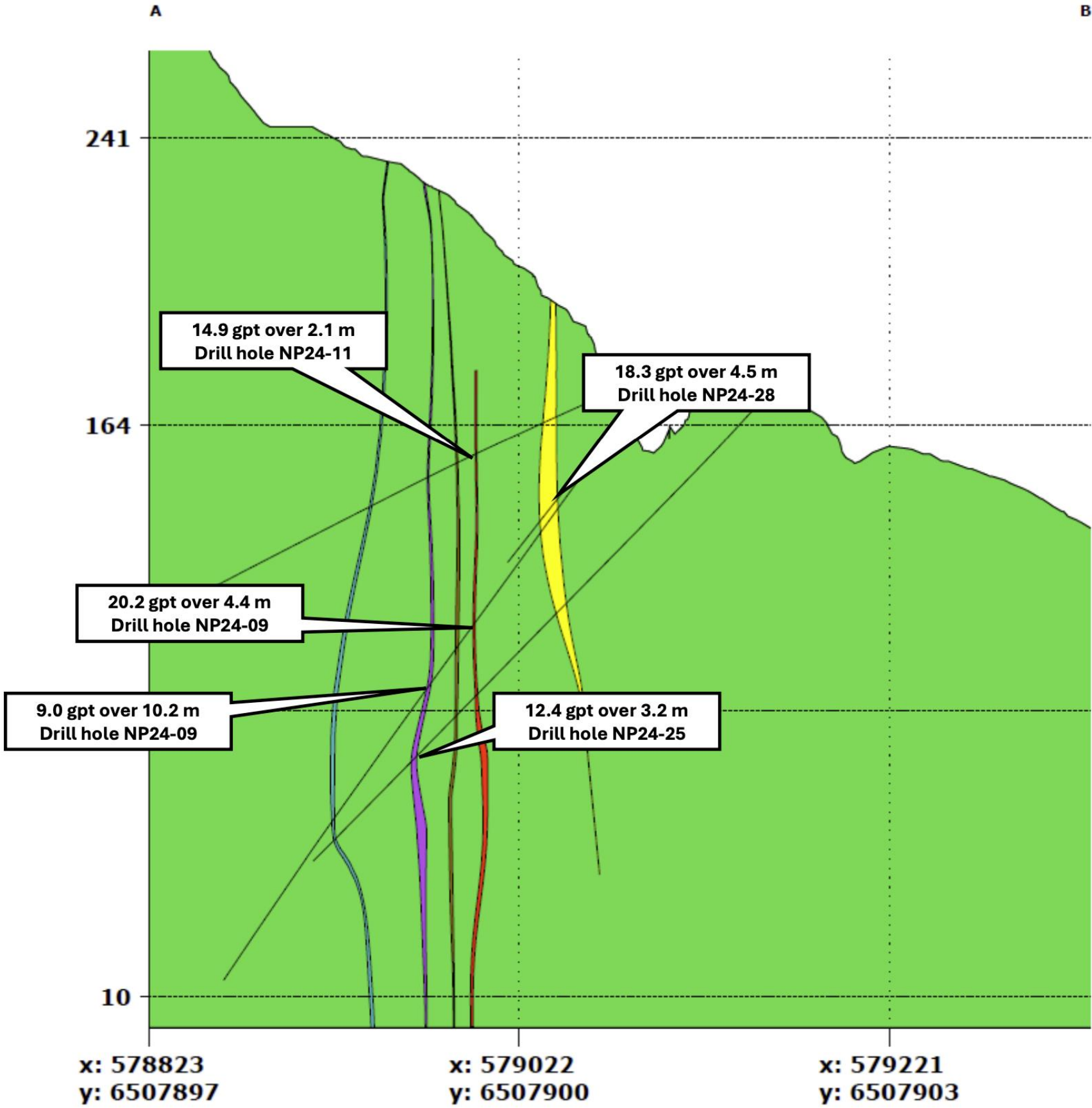


Location
UTM 8 North Zone
 A: 579118, 6507833
 B: 578904, 6507886

NEW POLARIS Resource Expansion Drill Results

Drill Highlights (Aug 29, 2024)

| North Zone/ Hole # | Grade (Au g/t) | Width (m) | From (m) |
|-----------------------|-------------------|--------------|-------------|
| NP24-09 | 20.2 | 4.4 | 121.6 |
| including | 26.9 | 3.0 | 123.0 |
| NP24-28 | 18.3 | 4.5 | 69.8 |
| including | 33.6 | 2.0 | 72.3 |
| NP24-11 | 14.9 | 2.1 | 106.7 |
| including | 30.1 | 1.7 | 106.7 |
| NP24-25 | 12.4 | 3.2 | 213.3 |
| including | 19.7 | 1.0 | 213.3 |
| NP24-09 | 9.4 | 9.8 | 153.0 |
| including | 15.6 | 2.6 | 154.5 |



Legend

- Overburden
- Bedrock
- Vein_1
- Vein_2
- Vein_3
- Vein_4
- Vein_5

Scale: 1:1,600
0m 100m

CANAGOLD

Location
UTM 8 North Zone
 A: 578823, 6507897
 B: 579329, 6507905

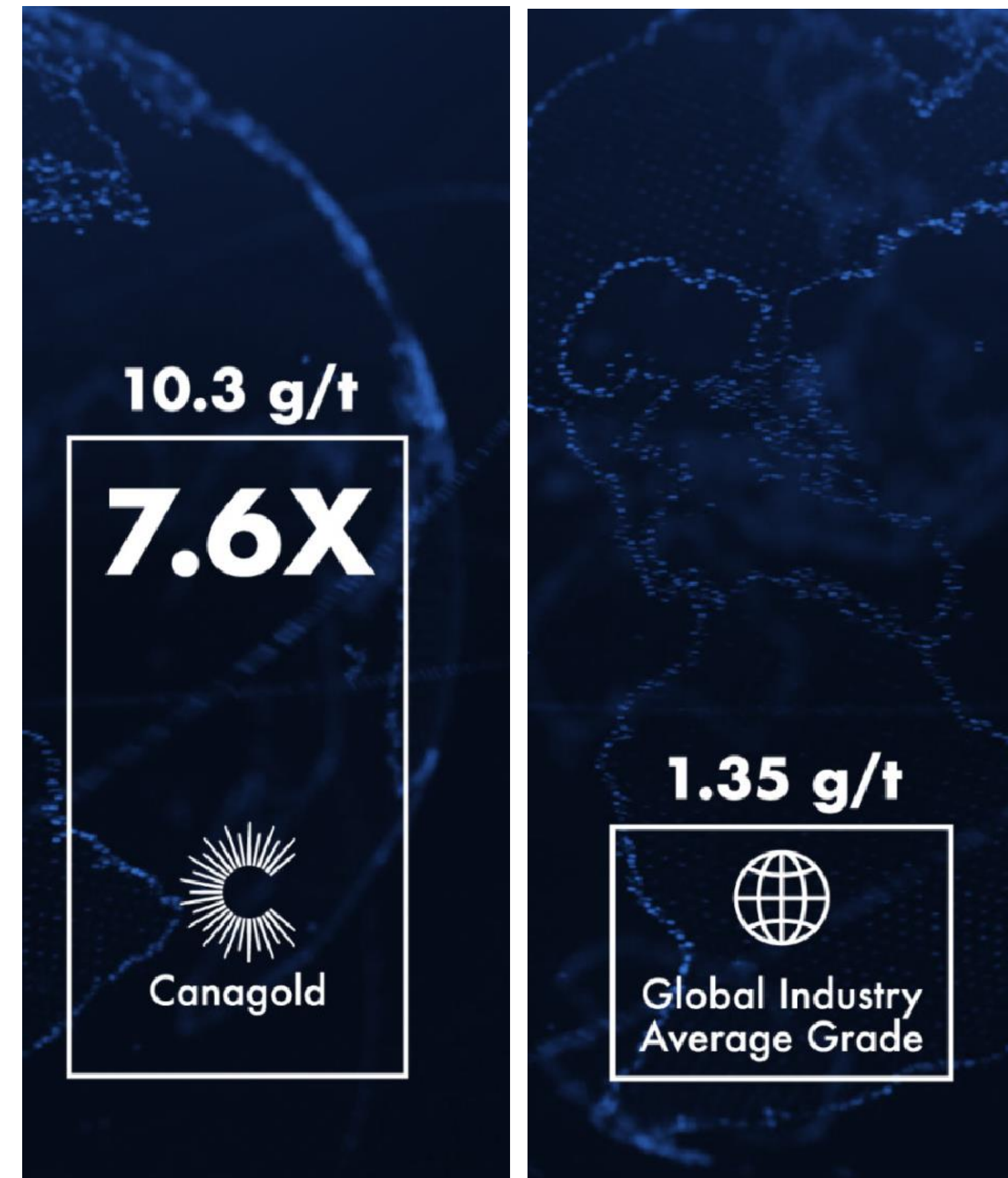
New Polaris Gold Mine
 August, 2024

*Drill intercepts shown are core length as insufficient drilling has taken place to determine the true dip and strike orientation of the veins being intercepted.

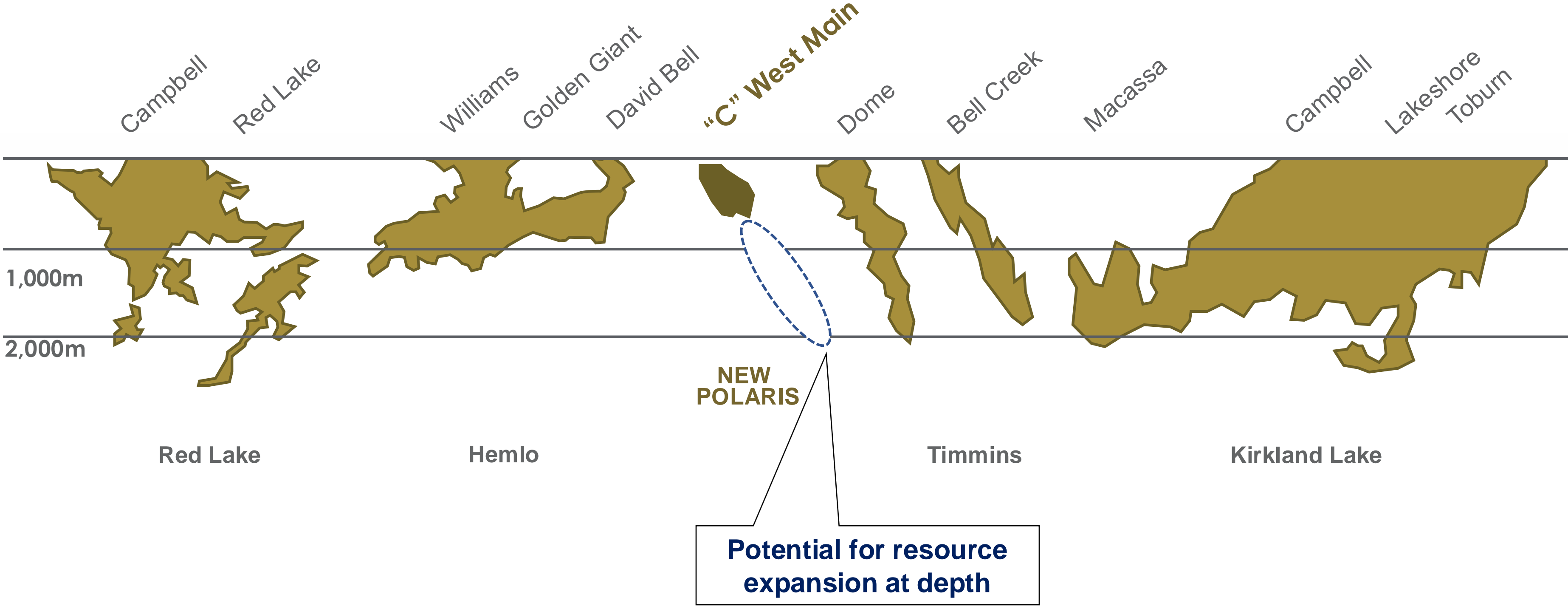
NEW POLARIS Grade vs Global Average

- Grade is King: Higher Grades = Richer Ore
- In combination with lowest quartile AISC
- Industry average AISC = \$900 - \$1,100/oz
- New Polaris Gold Grades are 7.6 X Higher Than Global Average*
- Average grades are decreasing with time
- High-Grade deposits are becoming even more rare

(*) Source: S&P Global Market Intelligence



Mesothermal Gold Deposits





Opening Ceremonies at the
HAA KUSTEEYÍ Celebration in ÁATLEIN (Atlin) BC

NEW POLARIS Sustainability & Community Engagement

- Canagold establishes office in Atlin in June
- Canagold attended Haa Kusteeyi (Our Way of Life) event in July hosted by Taku River Tlingit
- TRT members of the Technical Working Group brought to site for viewing
- Canagold participated in fishing activities on Taku River and talked to people on the river
- Canagold held in-person meetings in Atlin (Fireside Chats) to discuss the project and answer questions

NEW POLARIS PERMITTING



- Officially entered the BC Environmental Permitting process in March 2023
- Community engagement, information sharing, consultation sessions completed in May and June, 2023
- Detailed project description submitted to BC Environmental Assessment Office
- Canagold and the Taku River Tlingit First Nation (TRTFN) have formed a Technical Working Group which meets on a weekly basis to facilitate their input into the design and operating parameters for the project.

The graphic features a dark blue background. In the top left corner is the British Columbia logo. To its right, the word "EPIC" is written in large, white, bold, sans-serif capital letters. Below "EPIC", the words "New Polaris Gold Mine" are written in a slightly smaller, white, sans-serif font. Underneath that, the words "Environmental Assessment" are written in a smaller, orange, sans-serif font. At the bottom center, there is a white rectangular box with a thin white border containing the text "In Progress" in a bold, white, sans-serif font.

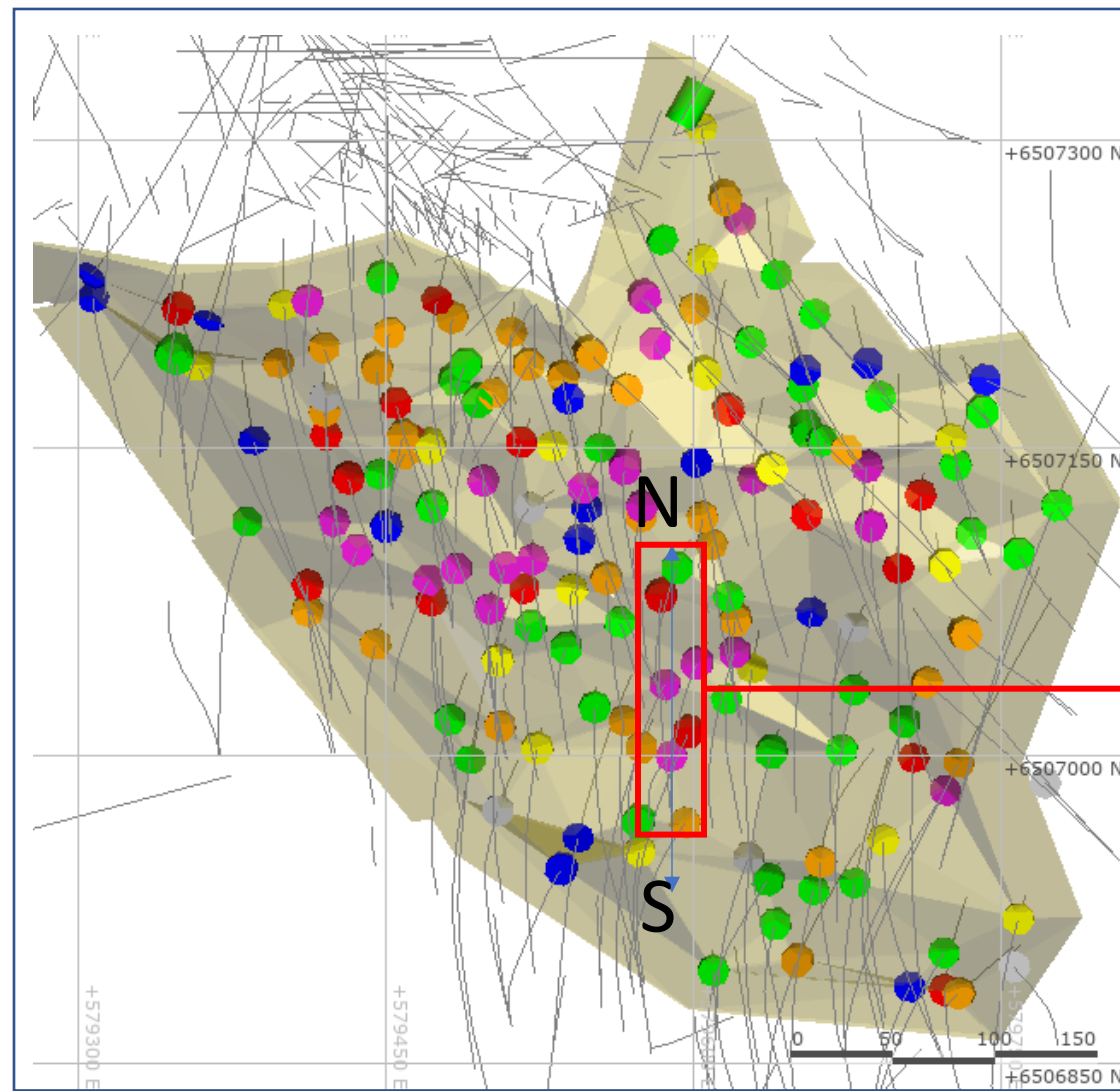
NEW POLARIS Project Timeline



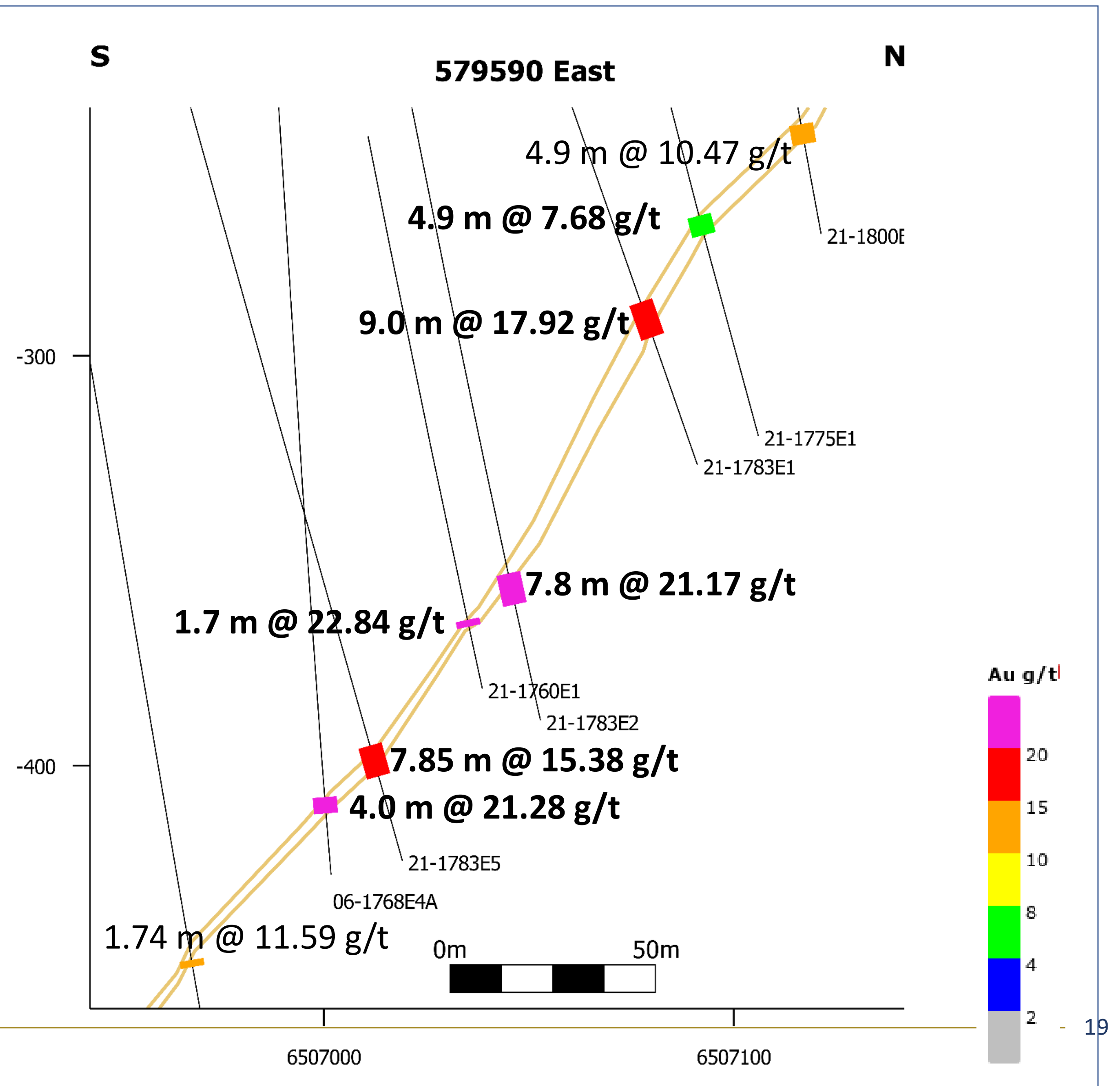


CANAGOLD

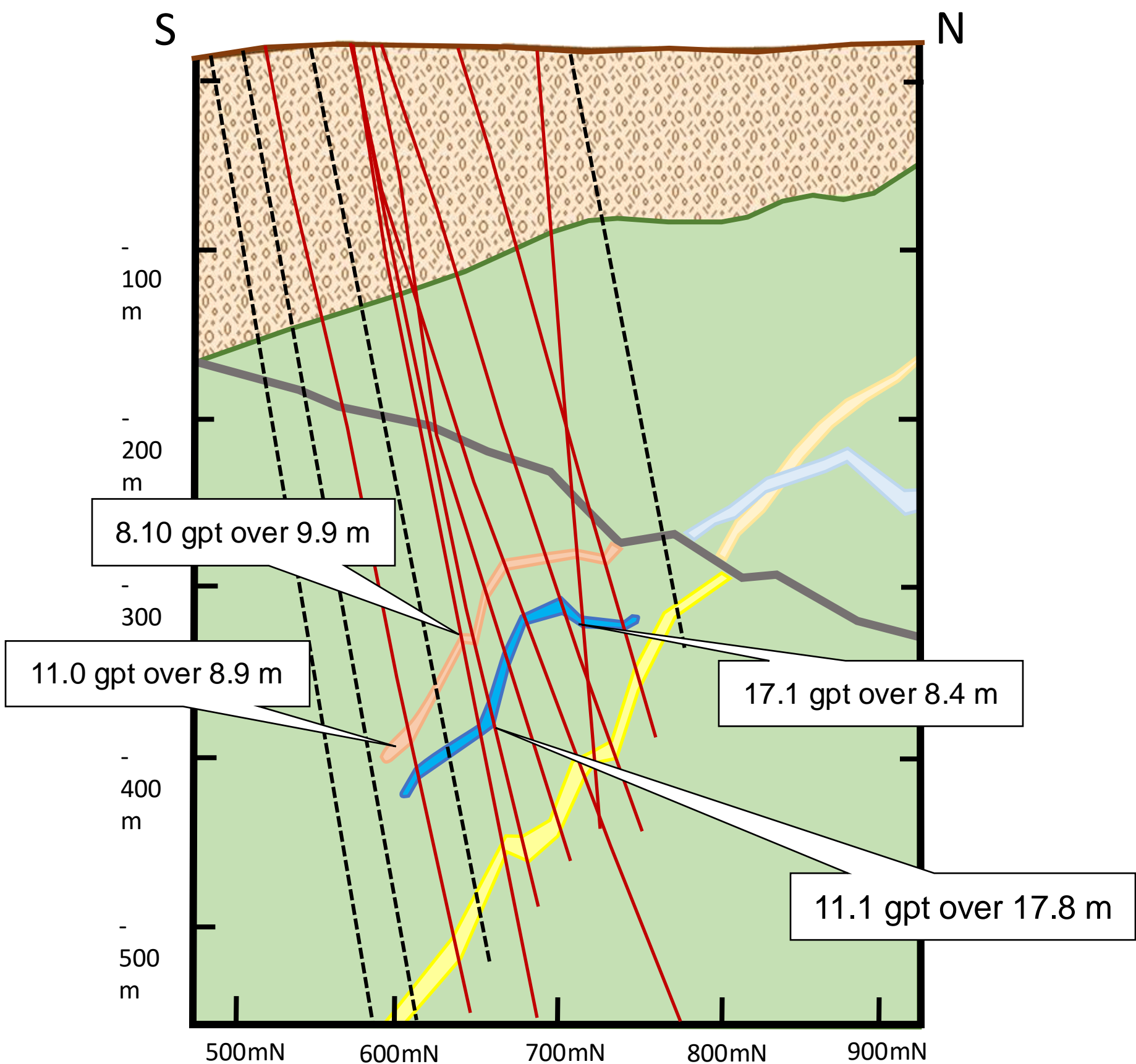




CWM Vein-Plan View



NEW POLARIS Parallel Zones

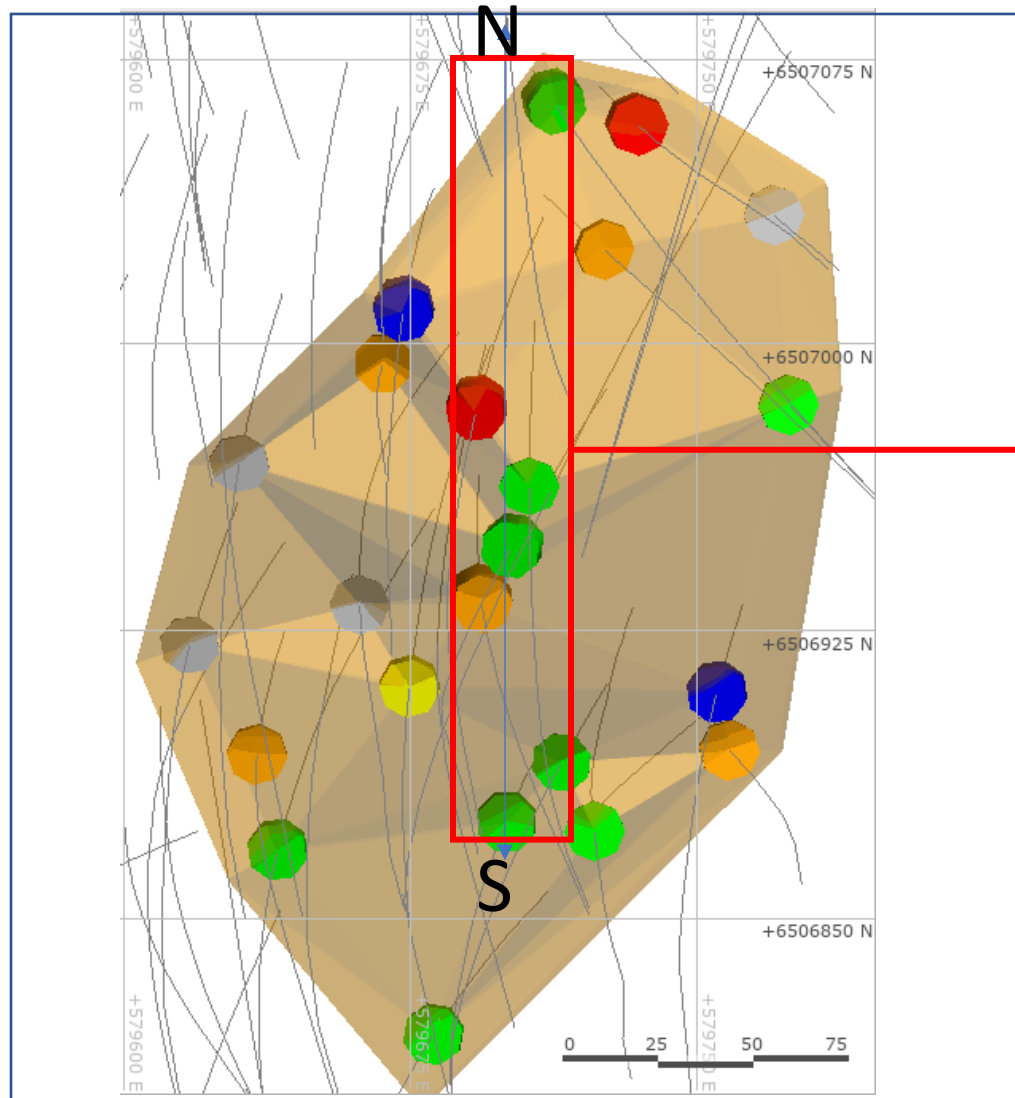


LEGEND

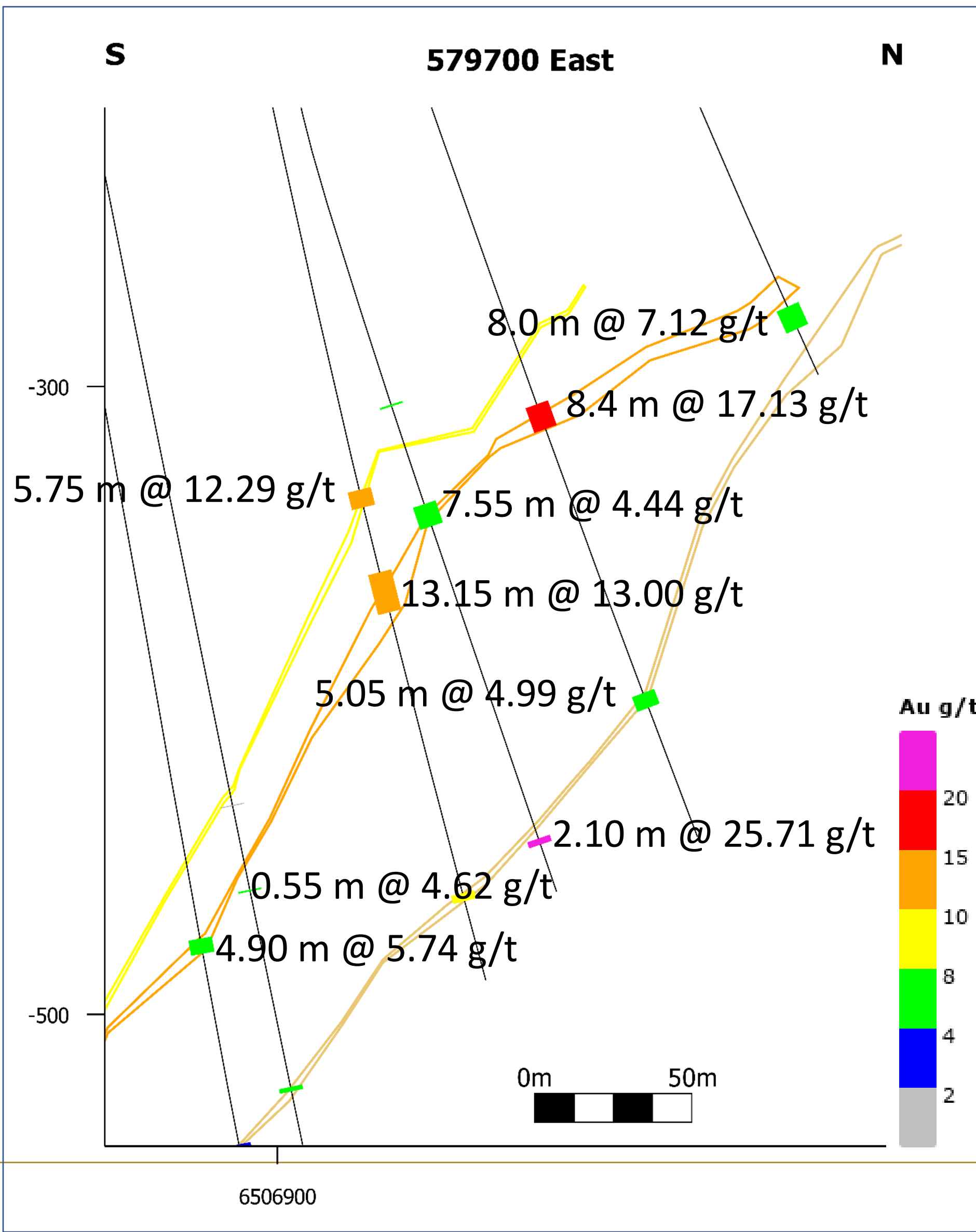
- West Main C Vein
- East Low C Vein
- East High C Vein
- C9 Vein
- C10 Vein
- Overburden
- Bedrock
- Drill Hole
- Planned Hole

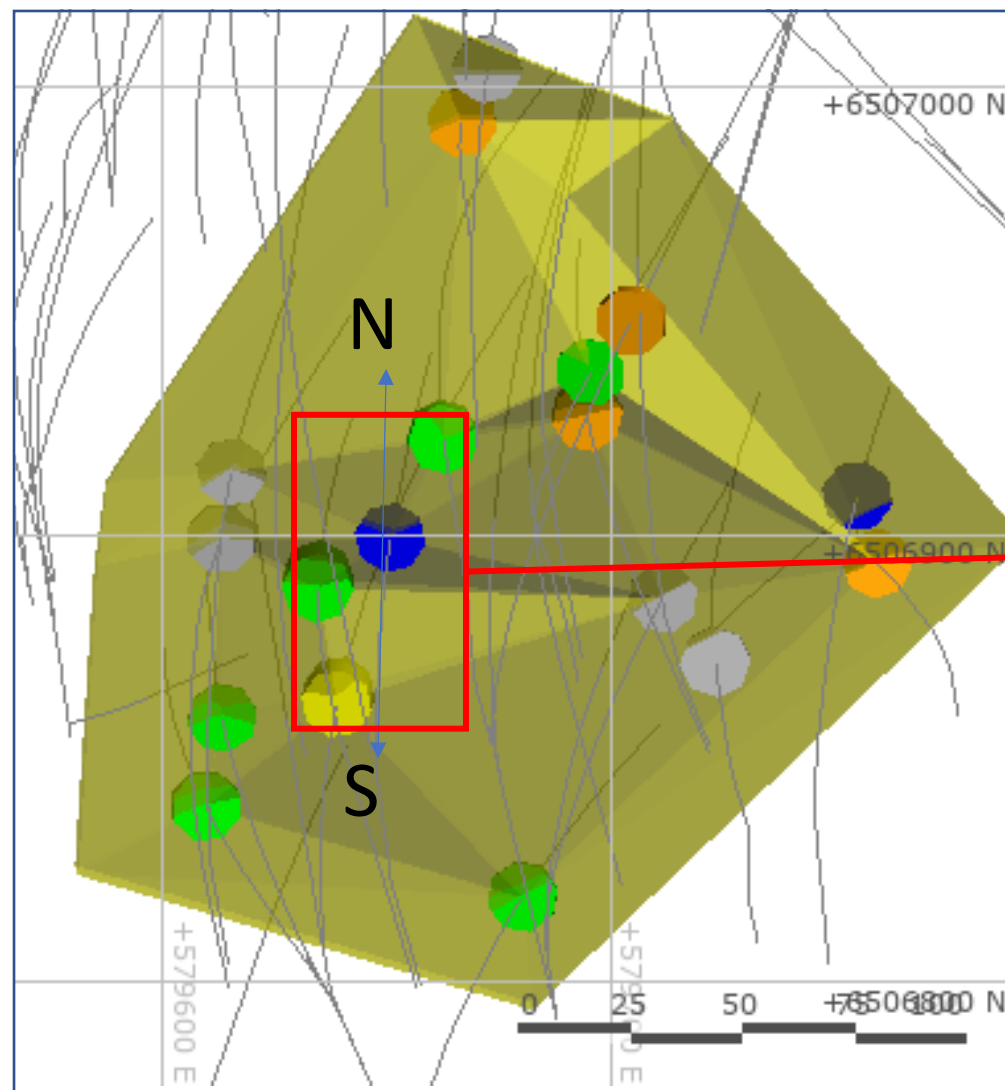
0 100
Meters
Scale 1 : 2 000

Section 1875mE
Mine Grid
New Polaris Gold
Mines
November 2021

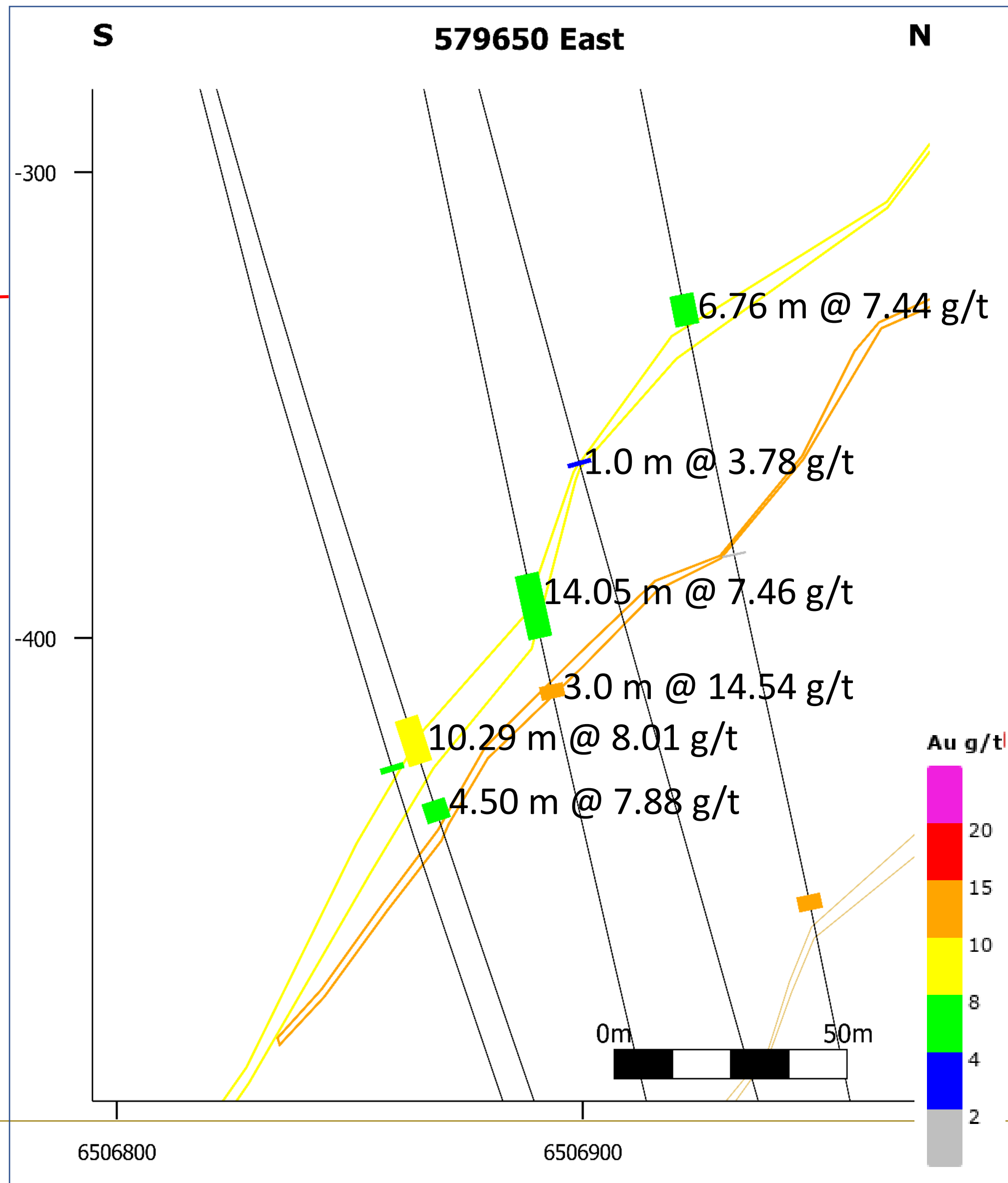


C10 Vein-Plan View



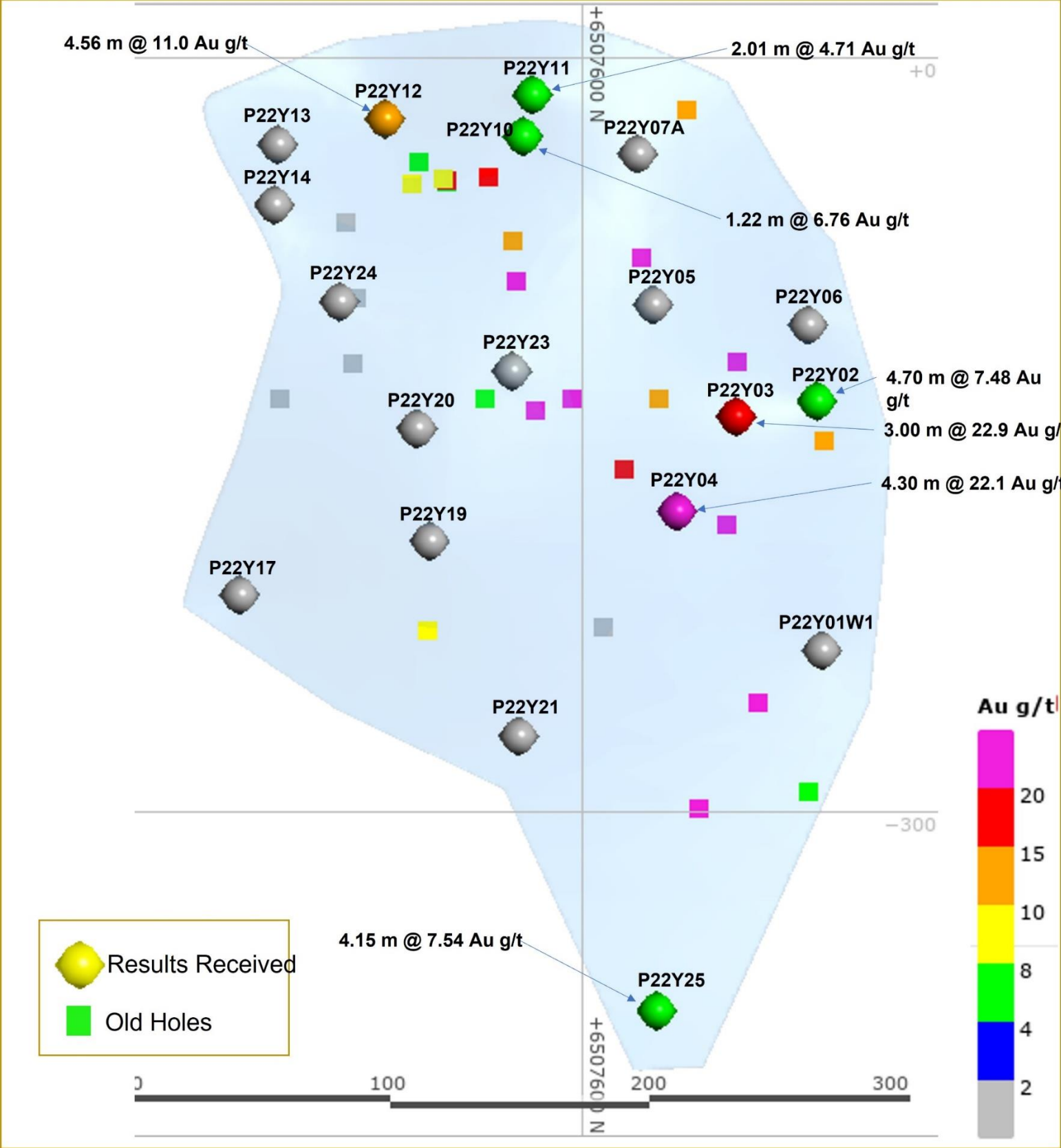


C10 Vein-Plan View

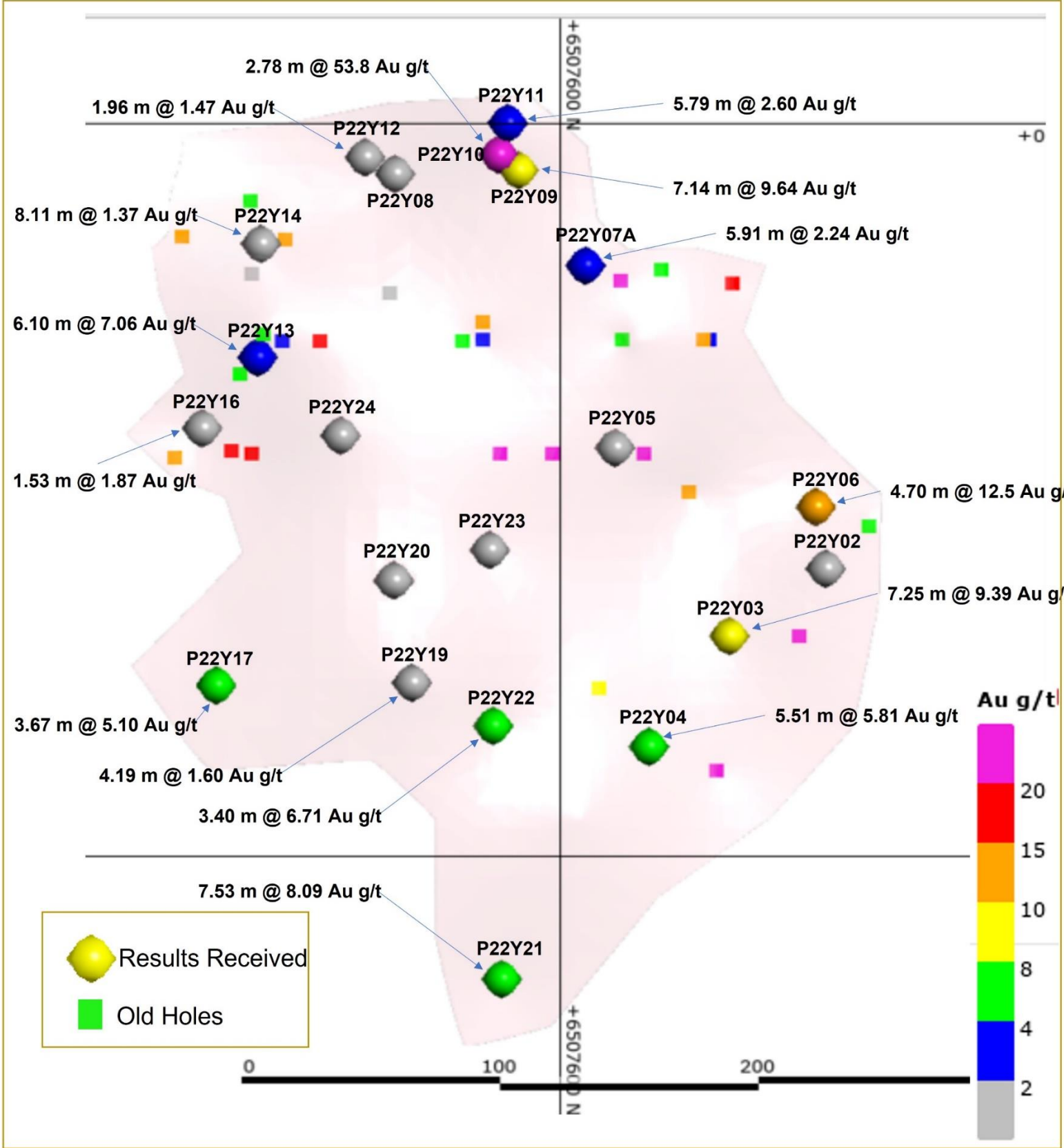


NEW POLARIS Y-Vein Drilling

Y19 Vein Longitudinal Section

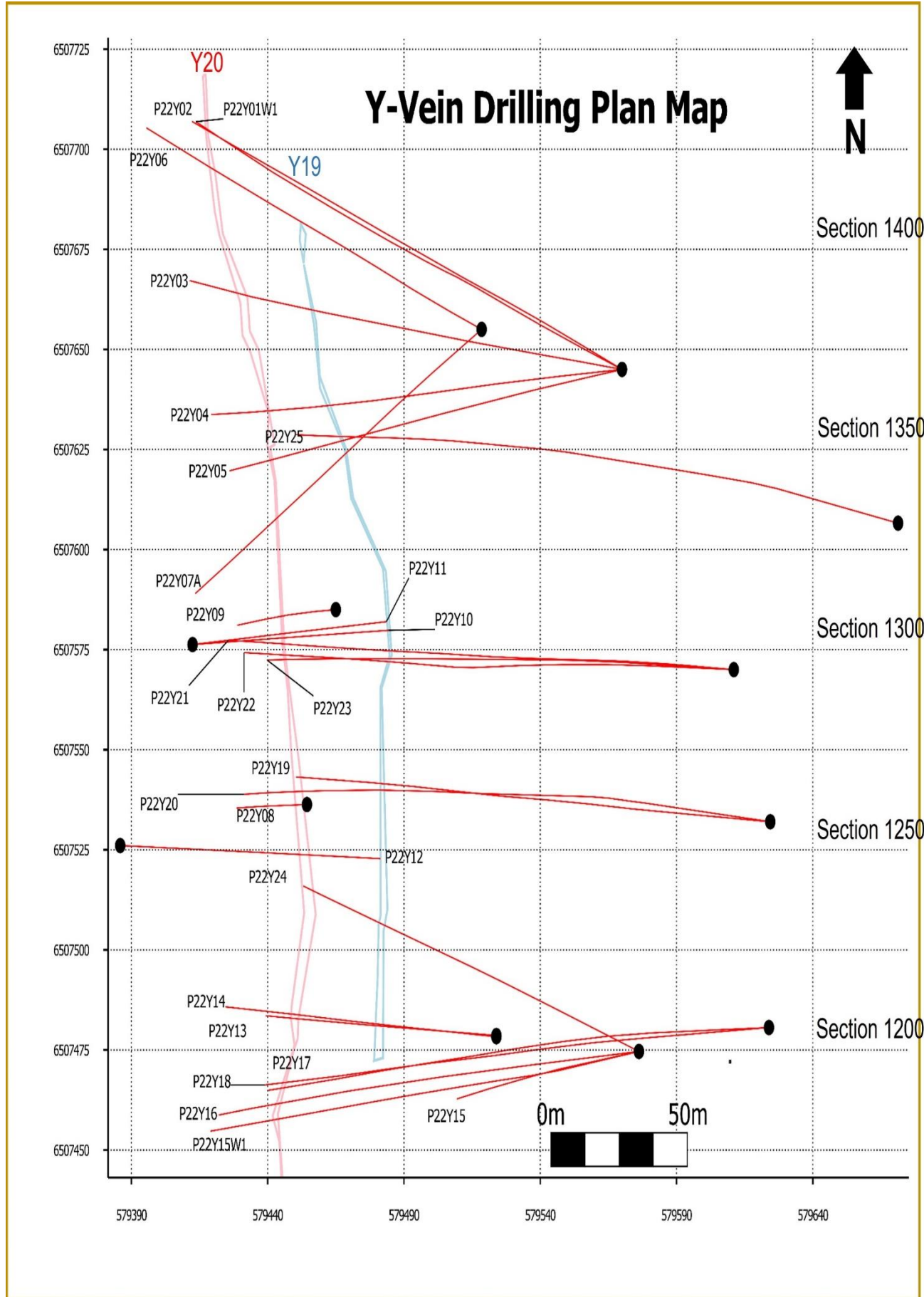


Y20 Vein Longitudinal Section

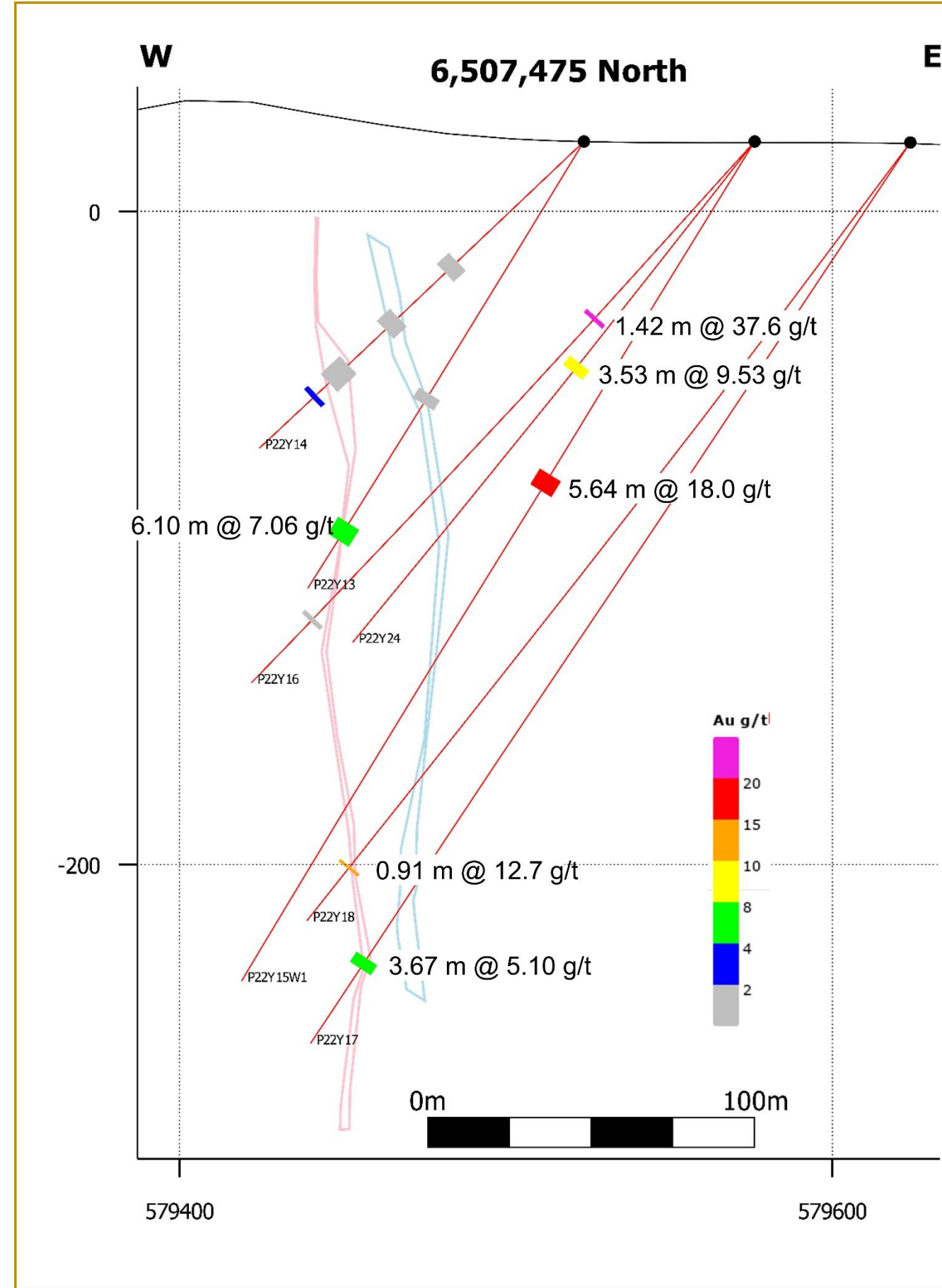


Y19-Y20 Drilling

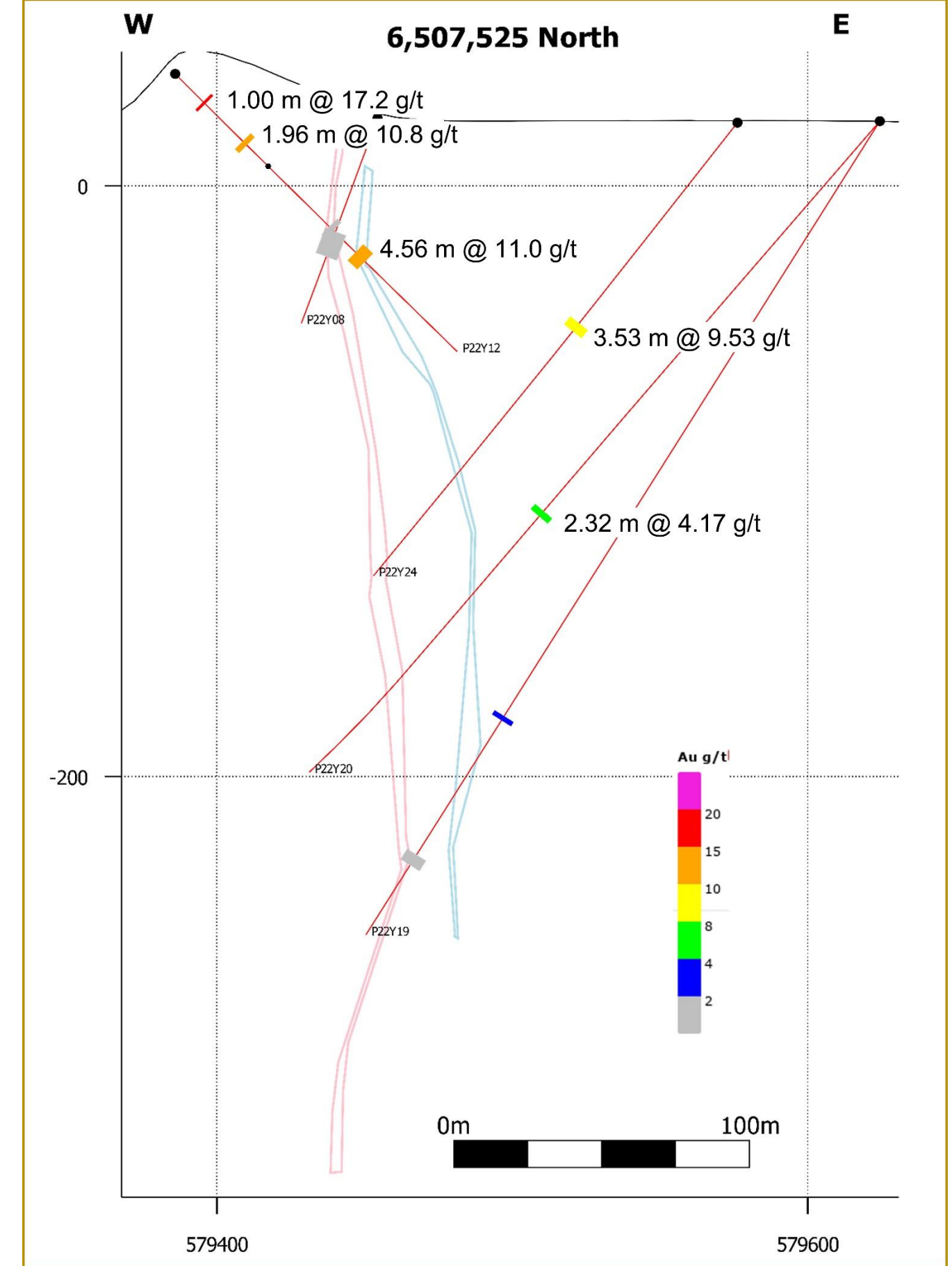
Y-Vein Drilling Plan Map



Cross Section 1200



Cross Section 1250



Y19-Y20 Drilling

Cross Section 1300

Cross Section 1350

Cross Section 1400

